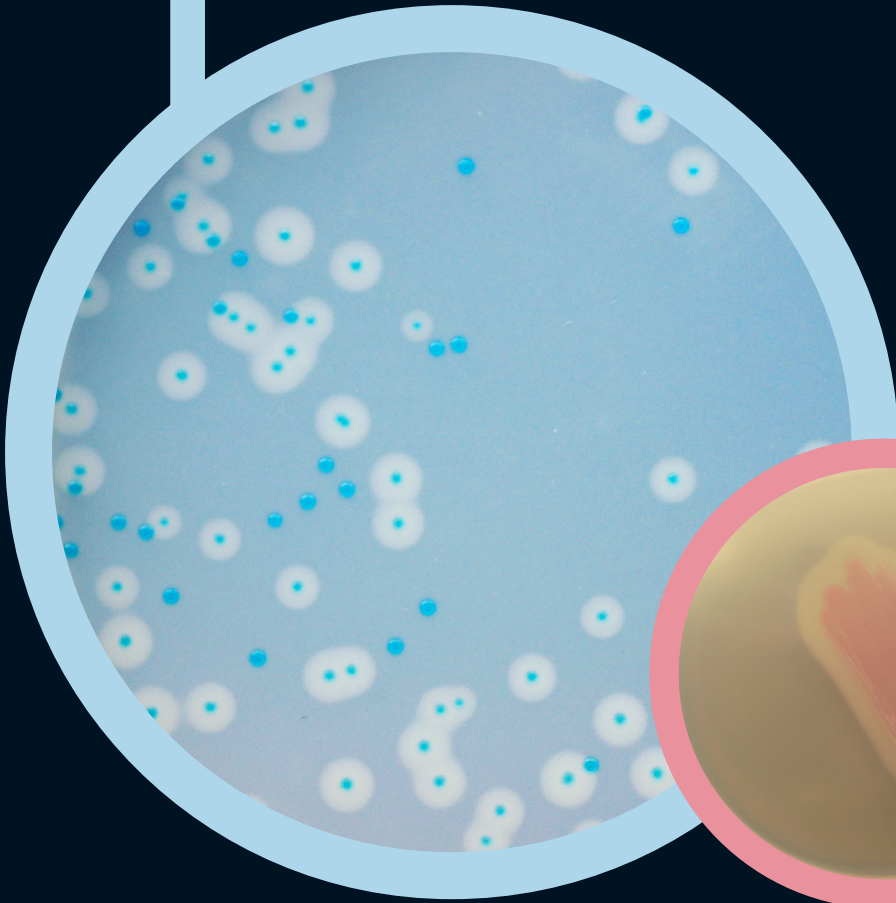
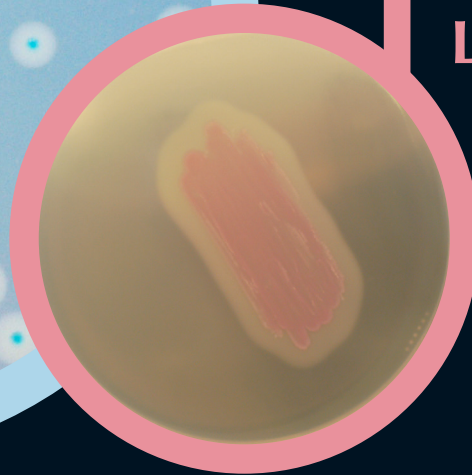


● Colorex™  
Listeria



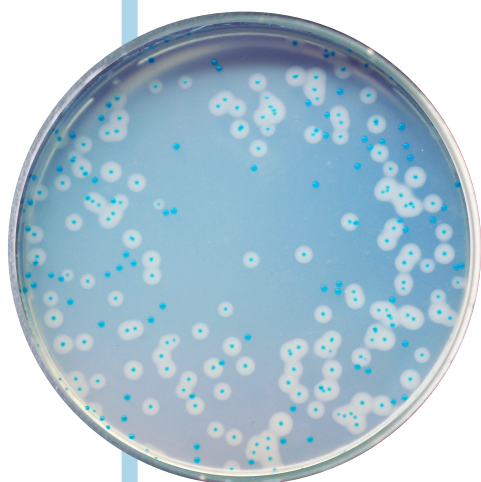
● Colorex™  
Identification  
Listeria



For detection, enumeration and confirmation  
of *Listeria monocytogenes*

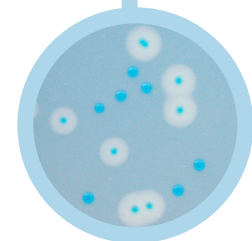
**Colorex™**

Ready to use plates made with the original CHROMagar™ powder base



### Plate Reading

• *L. monocytogenes*  
→ blue, diameter less than 3 mm,  
regular and white halo



### Plate Reading

• *L. monocytogenes*  
→ rose surrounded  
by a white halo



## Colorex™ Listeria Method

*Listeria monocytogenes* is a widespread bacteria, present in the soil, sewage or faecal matter. Its ability to form listerial biofilms on contact surfaces makes it difficult to eliminate. This pathogen can cause serious food poisoning and is therefore frequently a microbial Q.C. target in food processing facilities to avoid food contamination. Contamination can occur at all steps of the food manufacturing chain from raw materials to place of consumption.

CHROMagar™ has developed a **rapid method for the detection of *L. monocytogenes*** in food stuff, comprising the following simple steps (1) enrichment in half frazer broth for 24h, (2) isolation in Colorex™ Listeria, (3) confirmation of *Listeria monocytogenes* species in Colorex™ Identification Listeria.

### Colorex™ Listeria Method vs ISO 11290 Method:

	Colorex™ Listeria Method	ISO 11290 Method (classical)
Number of Enrichments	<b>1 for 24 h</b>	2 = total 48 h
Number of plates Incubation	<b>1 plate for 24 h</b>	4 plates for 24 h & 48 h
Number of confirmatory tests	<b>1 test</b>	7 tests
<u>Time to result:</u>		
Negative results	<b>After 2 days</b>	After 5 days
Positive results	<b>After 3 days</b>	After 7 days

## Colorex™ Listeria

For detection and numeration of *Listeria monocytogenes*

### Medium Performance

#### CLEAR READING

Since *L. monocytogenes* and *L. innocua* have similar biochemical properties, they cannot be differentiated on traditional media (Palcam, Oxford). Colorex™ Listeria helps to easily differentiate *Listeria monocytogenes* from other *Listeria* directly at the isolation step: the colonies are blue and surrounded by a white halo due to a specific phospholipase activity.

## Colorex™ Identification Listeria

For confirmation of *L. monocytogenes* species from suspect colonies on Colorex™ Listeria

### Medium Performance

#### SIMPLICITY/QUICK RESULTS

Classical confirmatory tests for the *L. monocytogenes* species include many tedious and time consuming steps (purification + catalase + haemolysis + dextrose + rhamnose + xylose...) Colorex™ Identification Listeria simplifies the species confirmatory step and reduces the workload, hence improves the efficiency of the laboratory.

A single spot of a suspect colony out of **Colorex™ Listeria** directly put onto **Colorex™ Identification Listeria**, will provide confirmation of *L. monocytogenes* species within 24 hours.

Distributed by



P.O. Box 788 Waterville,  
Maine 04903-0788  
Toll Free Phone: (866) 591-7120  
Telephone: (207) 873-7711  
Fax: (207) 873-7022  
Email: [info@nelabservices.com](mailto:info@nelabservices.com)

Ready to use plates made with  
the original CHROMagar™ powder base

CHROMagar, Paris - France  
[www.CHROMagar.com](http://www.CHROMagar.com)