



General Overview..... 2

Frequently Asked Questions (FAQs)..... 4

Prepared Culture Media: Plated..... 8

Prepared Culture Media: Tubes..... 16

Prepared Culture Media: Bottles..... 24

Microbiological Reagents..... 31

Vial Filling..... 32

Other Laboratory Supplies..... 33

Indoor Air Quality and Water Microbiology Testing..... 34

Beverage/Food Microbiology & Chemistry Testing..... 35

Environmental Testing..... 36

Sterility & Bioburden Testing..... 37

Custom Media Specification Sheet..... 38

Credit Application..... 39



Northeast Laboratory Services  
P.O. Box 788  
Waterville, Maine 04903

Sales & Customer Service:  
800-244-8378 x304 or x316  
Fax: 877-FAX-NELS (329-6357)  
www.nelabservices.com  
info@nelabservices.com

Northeast Laboratory Services was founded in 1972 as Maine Poultry Consultants and later became Maine Poultry Consultants/Northeast Laboratory Services. After a decline in the poultry business in Maine, the company served its environmental and microbiological products clients under the name of Northeast Laboratory Services (NEL) for the next several years. In 1997, NEL merged with Binax, Inc. a Portland-based research and development firm. In April of 2001, the Laboratory was purchased back by its original founder, Dr. Kenneth Eskelund who acts as a consultant to the business and Corporate Treasurer along with Mr. Rodney "Beau" Mears, NEL CEO and President.

The business units of NEL are departmentalized into four (4) areas:

- Manufacturer of prepared microbiological media
- Manufacturer of vial fills
- Microbiology Services: Indoor Air Quality, Food microbiology, sterility/bioburden testing, etc.
- Environmental Analytical Services: Chemistry analyses

**The Manufacturing Department** is an FDA registered in-vitro diagnostic manufacturer, and is USDA approved. Approximately eighteen (18) full time employees are in this department.

The market segment we service includes industries such as: pharmaceutical, biotechnology, food, environmental, clinical, government, beverage, collegiate, and cosmetic. The product line includes custom and proprietary media as well as standard microbiological products.

Vials and diluent bottles can also be filled at NEL in a variety of formulations. Everything from the vial to the packaging is customizable and private labeling is available.

Dehydrated powder is also available in standard sizes or customized repacks. NEL also distributes for approximately seventy-five (75) different vendors and aims to be a "one-stop shop." Animal bloods, organisms, and standard laboratory disposables are available.

To reach our customer service representatives and place orders for prepared media, please dial Kathy at extension 304, Tamara at extension 316, or Jessica at extension 332. Michelle Badaraco, Sales and Marketing Manager, oversees the Customer Service Department and sales for all divisions at NEL. She can be reached at extension 305 or at [mbadaraco@nelabservices.com](mailto:mbadaraco@nelabservices.com).

**The Environmental Services Department** holds accreditations in thirteen (13) states and is registered with the U.S. Navy. There are approximately seventeen (17) full time employees in this division.

The analytical chemistry laboratory performs a variety of analyses for private clients, engineering firms, and government agencies. Residential customers can take advantage of potability testing and radon analysis. NEL commits to rigorous Quality Control standards where our facility is routinely audited and our reports are carefully evaluated. It is the laboratory's policy to conduct all projects in a timely manner using USEPA, FDA, ASTM, AOAC and other Standard Reference Methods as well as state of the art technology/instrumentation. With the increase of decommissioned nuclear power plants throughout the United States, NEL has become increasingly active in the analyses of radioactive materials. We perform analyses for several large nuclear power plants such as Yankee Rowe, CT. Yankee, Big Rock and Fermi 2 of Michigan, Millstone, CT. and Maine Yankee.

## Credit Application

Business Name:			
Address:			
Telephone Number:	Fax Number:	DUNS #:	
E-Mail:	Establish Date:	Federal ID #:	
Corporation/LLC/Partnership/Sole Proprietor:		Sales Tax Exempt? If yes, please include copy of certificate	
Shipping Address:			
Contact Person:	Phone:	Fax:	
Billing Address:			
Contact Person:	Phone:	Fax:	
Are Purchase Orders Required:		Type of Industry:	
How did you hear about us?			
<b>Names of Owners, Partners or Officers</b>			
Name	Title	Address	Phone
1.			
2.			
3.			
<b>Bank Reference</b>			
Name	Address	Phone	Representative
<b>Trade Reference</b>			
Name	Address	Phone	Representative
1.			
2.			
3.			
<p>Signature _____ Title _____ Date _____</p>			
<p>By Signing the above, the firm agrees:</p> <ol style="list-style-type: none"> <li>1. That all information on this form is true.</li> <li>2. That Northeast Laboratory Services may verify the above information and research the company's credit history.</li> <li>3. To pay each invoice within thirty (30) days.</li> <li>4. To pay a 1.5% service charge per month on any invoice thirty (30) days or older.</li> <li>5. To pay collection costs and attorney's fees in the event that collection efforts become necessary.</li> </ol>			
<p><b>Please Note:</b> Northeast Laboratory Services, Inc. policy is not to release any final written reports/ orders until this information is obtained.</p>			
<b>Northeast Laboratories Internal Use</b>		Client Account Number:	
Date:		Credit Limit:	
Approved By:		Department:	



# Custom Media Specification Sheet

Name of Distributor or Primary Customer: \_\_\_\_\_

NEL Representative: \_\_\_\_\_ Date Requested: \_\_\_\_\_

DESCRIPTION OF PRODUCT: \_\_\_\_\_

OTHER and/or Same As: Existing Part # or Vendor Name, if available: \_\_\_\_\_

Customer Approved Pilot Lot Required:  YES (Qty Needed) \_\_\_\_\_ or  NO

**Estimated usage (to determine batch sizes):** \_\_\_\_\_

**PLATE SIZE:**  MONO DISH 100x15mm  BIPLATE  TRIPLATE  LG DISH 150x15mm  
 FILTER DISH 60x15mm  CONTACT DISH 65x15mm  OTHER \_\_\_\_\_

**LABEL REQUIREMENTS:**  PLN WHITE  NEL LOGO  CUSTOM **FILL PER CONTAINER** \_\_\_\_\_

Please Note below: Any special or custom Plate Stamp Requirements: \_\_\_\_\_

**BOTTLE DESCRIPTION:** \_\_\_\_\_

**CAP DESCRIPTION:** \_\_\_\_\_

**LABEL REQUIREMENTS:**  PLN WHITE  NEL LOGO  CUSTOM **FILL PER CONTAINER** \_\_\_\_\_

**TUBE DESCRIPTON:** \_\_\_\_\_

**CAP DESCRIPTION:** \_\_\_\_\_

**LABEL REQUIREMENTS:**  PLN WHITE  NEL LOGO  CUSTOM **FILL PER CONTAINER** \_\_\_\_\_

**STORAGE TEMP REQUIREMENTS:** Refrigeration (2-8°C) or Room Temp (2-30°C) **pH SPEC** \_\_\_\_\_

**MEDIA FORMULA:** (attach copy or reference) If components and/or powders are commercially available, indicate vendor(s).

Primary Vendor: \_\_\_\_\_ Alternate Vendor: \_\_\_\_\_

**QC REQUIREMENTS:**  Sterility only (includes confirmation of pH & Fill ± 5%, and 72 hr. sterility testing)  
 Growth challenges required\*  USP Testing required

\*Please list test organisms & ATCC #: \_\_\_\_\_

**PLEASE INCLUDE OR ATTACH ANY SPECIAL INSTRUCTIONS**

Delivery: (indicate if special handling required) \_\_\_\_\_

Please indicate any special or customer package design: \_\_\_\_\_

**IN HOUSE USE ONLY:**

Date Received: \_\_\_\_\_ Date Completed: \_\_\_\_\_ Part # Assigned: \_\_\_\_\_

# General Overview

NEL also operates a satellite office at 508 Riverside Drive in Portland, ME , which serves as a drop off location for samples which are brought to the Winslow laboratory the same day. It also partners with the lab to offer a courier service. Sampling services are also available.

Dr. Jim Galasyn, Chemistry Lab Manager, can be reached at extension 337.

**The Microbiology Services** includes three (3) units, Environmental Microbiology, Food Microbiology, and Sterility & Bioburden Testing. There are approximately six (6) full time employees in this division.

The Environmental Microbiology Department routinely analyzes and identifies a variety of microorganisms of air, water, mold, and soil samples.

Much residential monitoring includes assaying drinking water for coliform bacteria and E. coli as indicators of surface water and septic issues. Public bathing beaches and pools are tested for indicators of fecal contamination and potential infectious agents. Sludges and composts are assayed for clients primarily in the field of wastewater treatment. Assays for molds and bacteria in air (bioaerosols) and building materials are conducted to assess and control exposure to workers and products. The Indoor Air Quality laboratory is AIHA accredited and experiences frequent audits.

Increased emphasis on food safety allows NEL to assist food manufacturers increase their testing efficiencies when required to monitor their product or manufacturing environment. NEL provides custom reporting, quick turn around times, volume discounts, and free consultation services to do so. Shelf live studies, custom studies, and nutritional labels are also available. The NEL food microbiology laboratory is A2LA accredited and experiences frequent audits.

Bioburden and Sterility testing in compliance with ISO regulations is also performed in-house and includes viable air monitoring, surface monitoring, passive air monitoring, sterilization validation, microbial identification, and routine bioburden testing.

Brett Goodrich, Microbiology Laboratory Manager, can be reached at extension 321.

We can be reached from 8:00 AM to 5:00 PM EST at (207)873-7711, toll free 1-800-244-8378 or via toll free fax at (877)-329-6357. Our 24/7 emergency hotline can be accessed by dialing "7" during after dialing the 800 number. Someone will be paged immediately. We look forward to servicing your company and increasing your laboratory and production efficiencies. Our President and CEO, Beau Mears, is also available for your calls and can be reached personally at extension 331.

Please visit us online. [www.nelabservices.com](http://www.nelabservices.com)

Thank you for your interest in NEL.



## Frequently Asked Questions (FAQs) NEL Qualifications and Background

---

### **When was NEL established and what type of ownership?**

NEL was founded in 1972. In 2001, we became veteran-owned. We are currently a corporation with two owners.

### **How many people full and part-time are working in your manufacturing division?**

NEL's manufacturing department has 28 full-time employees. Our customer service/sales department consists of 5 people. We partner with our Chemistry and Microbiology departments to help service our customers' needs, which is a total of about 50 NEL employees who are available to assist with media needs if required 24/7.

### **How qualified are you?**

We are a FDA registered in vitro diagnostic manufacturer with 3 Class 100 clean rooms. All manufacturing processes are according to FDA and USDA guidelines. Our Chemistry and Environmental labs hold NELAC, AIHA and A2LA accreditations. (For updated accreditations, visit our web page at [www.nelabservices.com](http://www.nelabservices.com)).

### **How experienced are you at providing services like the ones we are currently receiving?**

We have been exceeding laboratories' expectations for over 35 years by fulfilling not only the basics, but "wish lists" as well. Not only can we provide "like services", we customize packaging, certificates, vessels, recipes, formulations, etc. to assist with productivity and cost effectiveness. (Referral letters available on the Internet at [www.nelabservices.com](http://www.nelabservices.com)).

## Sterility & Bioburden Testing

---

### **Viable Air Monitoring**

Incubation & enumeration of air strips  
W/ Media

### **Surface Monitoring**

Incubation & enumeration of contact plates  
W/ Media

### **Passive Air Monitoring**

Incubation & enumeration of settling plates  
W/ Media

### **Bioburden Testing**

Aerobic Bacteria  
Aerobic & Fungi  
Aerobic & Spore  
Aerobic, Spores & Fungi

### **Sterilization Validation**

Bacteriostasis/Fungistasis USP method  
Direct Transfer Method - per device or solution  
Direct Transfer Method - Spore Strips  
Growth Promotion, Test of Cultured Media  
Direct Transfer - Biological Product

### **Microbial Identification**

Bacterial Identification, to genus + species  
Fungi, to genus (mold and yeast)  
Gram Stain

**\*NEL has 24/7 availability and there is no additional charge for 24/7 set-ups\***

This is a limited list of our capabilities.  
Additional testing services and custom methods or requests are welcomed.  
Please inquire with an NEL Customer Service Representative.



% Dry Solids	Conductance, Specific	Releasable Sulfide & Cyanide
% Solids	Corrosively (Langier Index)	Salinity
% Total Solids	Copper	Selenium
% Volatile Solids	Copper (Furnace)	Selenium (Furnace)
Acidity	Cyanide (Total)	Semi-Volatile Organics
Acrolein/Acrylonitrile Semi-Volatiles (BNA's)	Dissolved Oxygen	Extraction
Alkalinity, Total	Dissolved Solids	Settable Solids
Aluminum	Dry Weight	Silicate
Ammonia Nitrogen	Flash Point	Silver
Antimony	Fluoride	Silver (Furnace)
Antimony (Furnace)	Grease & Oil	Sodium Surfactants (MBAS)
Arsenic	Hardness (Calculation)	Suspended Solids
Arsenic (Furnace)	Iron	Tannin & Lignin
Barium	Lead	Thallium (Furnace)
Base/Neutral/Acids by Mass Spec	Lead (Furnace)	Tin
Beryllium	Loss on Ignition	Titanium
Biochemical Oxygen Demand (BOD-5)	Magnesium	Total Chloride
Biochemical Oxygen Demand (Soluble)	Manganese	Total Cyanide
Boron	Mercury	Total Inorganic Carbon
Cadmium	Mercury (Cold Vapor)	Total Kjeldahl Nitrogen
Cadmium (Furnace)	Molybdenum	Total Organic Carbon (TOC)
Calcium	Nickel	Total Organic Halogen
Cesium	Nitrate Nitrogen	Total Phenols (4AAP)
Chemical Oxygen Demand Chloride	Nitrite Nitrogen	Total Phosphorus
Chlorine, residual	Odor, Threshold	Total Semi-Volatiles Only
Chlorine, Total	Organic Nitrogen	Total Sulfate
Chromium	Oxidation-Reduction Potential	Total Sulfide
Chromium (Furnace)	Pesticides & PCB's	Total Volatiles Only
Chromium, Hexavalent	pH	Turbidity
Cobalt	Phenol (4AAP)	Vanadium
Color, APHA	Phosphate, Ortho	Volatile Organic Compounds
Complete TCLP	Phosphates	Volatile Acids
	Potassium	Volatile Organics Extraction
	Potassium (Available)	Volatiles Analysis by Mass Spec
	Regulated Organochloride Compound	Zinc

This is a limited list of our capabilities. Many tests are available via rapid methodology. Please inquire with an NEL Customer Service Representative.

## Frequently Asked Questions (FAQs) Ordering Information and Policies

### At what hours can a "live person" be reached?

Our normal business hours are 8-5 EST, but we also have 24/7 availability via 800-244-8378 x7 to assist with any public health or corporate emergencies.

### I don't see what I need in your catalog. Does this mean you don't have it?

Our forte is customization at an affordable price. It's impossible to keep our paper catalog up to date since we get so many requests every day. We currently have an on-line catalog on the web to assist with updates. If you still don't see what you need, just let us know and we'll get the information you need within 24 to 48 hours.

### Do you do manufacture prepared medias only?

Besides prepared basic and custom medias, we also manufacture vials and diluent bottles of various sizes and configurations. Please inquire about a specific request. NEL in addition supplies and repacks dehydrated medias/powders and supplies animal bloods. We represent over 75 distributors to assist you with "one stop shopping". Our in-house environmental chemistry and microbiology testing laboratories offer a variety services as well.

### We are interested in sending out some environmental tests; do you do that too?

Yes, we have a full service Chemistry and Microbiology laboratory. The specific tests and accreditations are available on our web page at [www.nelabservices.com](http://www.nelabservices.com). Your customer service representative can connect you with the project manager for each of our divisions well, please call us at 1-800-244-8378.

### What are the shelf lives of your products?

For plated media products, we guarantee at least four weeks of shelf life upon receipt. For bottle and tube media products, we guarantee at least three months of shelf life upon receipt. Distributors may inquire about specific shelf life options/solutions. Products are performance guaranteed until the expiration date only if the product is stored at recommended temperatures and in the original packaging. Certain products may vary, please confirm with your customer service representative before ordering.

### How do I place an order?

NEL strives to make the ordering process convenient for you, so we have the following options available to make sure your experience with us is pleasant:

Phone: 800-244-8378, extension 304 or 316

Email: [orders@nelabservices.com](mailto:orders@nelabservices.com)

Toll Free Fax: 1-877-FAX-NELS (329-6357)



## Frequently Asked Questions (FAQs) Ordering Information and Policies

---

### Do you have any minimum ordering requirements?

Our focus has been to meet our customer's needs, and after many requests we have updated our services to exclude any minimums. Although our paper catalogs have mentioned minimums in the past, they have not been enforced since 2005.

### What is your return policy?

A NEL representative must authorize all returns. Returns are not subject to a restocking fee. Products returned due to validated performance problems or due to our error are exempt from handling and restocking charges and will be fully credited. Freight costs for the returned goods will be borne by the customer unless returned for validated performance problems or other error.

The following information must be provided at this time for each product to be returned:

1. Return Authorization Number
2. Catalog number and description.
3. Quantity to be returned for each product.
4. Applicable manufacturing lot number(s) and expiration date for each product.
5. Whenever possible, the original purchase number and our order number or invoice number.
6. Reason for return

### How do you handle shipping charges?

Normally, all shipments are F.O.B. Freight charges will be prepaid by NEL and added to the invoices. A Handling Charge for Hazardous Materials will be applied. Rush Orders and Quarantine shipments will be assessed an additional fee.

If no delivery date is specified, shipments will be made within 24 hours (for in stock items). Most shipments are made Mondays through Fridays. Feel free to call our Customer Service Department at 1-800-244-8378 x 304 for our current holiday shipping schedule or visit our web page. Shipments are made by the quickest and most economical method unless otherwise requested. Some options include Fed Ex standard, Fed X one day, Fed Ex two day, New Penn Trucking, UPS and DHL.

### What happens to items damaged in transit?

Title to the goods sold shall pass to the purchaser upon delivery to the carrier. If the purchaser receives merchandise in a broken or damaged condition, he or she should insist that the carrier note the damage or breakage on the delivery receipt.

If products received are in some manner unsatisfactory, NEL will replace these products to the customer at no charge. All claims for shortages or damaged merchandise must be submitted within 5 working days after receipt of order.

## Beverage / Food Microbiology & Chemistry

---

### PATHOGENS

*Listeria* speciation/confirmation  
*Salmonella* spp.  
*E. coli* O157  
*Shigella* spp.  
*Campylobacter*  
*Clostridium perfringens*  
*Bacillus cereus* Count  
*Staphylococcus aureus*  
*Yersinia enterocolitica*

### INDICATOR ORGANISMS AND OTHER ENUMERATIONS

Aerobic Plate Count (APC)  
 Anaerobic Plate Count  
 Aerobic Spore-forming Bacteria  
 Lactic Acid Bacteria Count  
 Coliform Bacteria (MPN)  
 Fecal Coliform- Shellfish (MPN)  
*E. coli* (MPN)  
*Enterococcus/Streptococcus*  
 Mold & Yeast Count  
 Standard Plate Count- Dairy (SPC)  
 Total Viable Count- Seafood (TVC)  
 Heterotrophic Plate Count  
 Psychrophilic Bacteria Count

### COMBINATION TESTS

Coliform & *E. coli*  
 Coliform & Fecal  
*E. coli* & Fecal Coliform

### SPOREFORMERS

Aerobic mesophilic spores  
 Anaerobic mesophilic spores  
 Aerobic thermophilic spores  
 Anaerobic thermophilic spores  
 Flat Sour Spores (NCA)  
 Sulfide Spoilage Spores (NCA)  
 Total Thermophilic Spores  
 Thermophilic anaerobes

### MISCELLANEOUS

Staphylococcal enterotoxin  
 Accelerated Shelf Life Study  
 Real-time Shelf Life Study  
 Nutritional Labeling (Database)  
 Nutritional Labeling (Chemical)  
 Foodborne Illness/Complaint Screen  
 Filth & Foreign Matter  
 Commercial Sterility (Canned Foods)  
 Microscopic Exam  
 Bacterial Identification (Biolog)  
 Bacterial ID- Fatty Acid Analysis (FAME)  
 Mold Identification (Genus level, per isolate)  
 Gram Stain

### CONSULTING SERVICES

On-Site Sampling and/or Process Evaluation  
 Organoleptic Evaluation (Triangle)  
 Challenge Testing- USP/CTFA/Custom  
 Product Preservation  
 SOP Development

### FOOD CHEMISTRY

% Alcohol  
 Brix/Baume  
 Butter Fat  
 Chemical Nutritional Label  
 Database Nutritional Label  
 Guaranteed Analysis (Crude Fat, Crude Fiber, Moisture, Protein)  
 Moisture/Solids  
 pH  
 Proximate analysis (Moisture, Fat, Ash, Protein, Calories, Carbohydrates)  
 Specific Gravity  
 Titratable Acidity  
 Trans Fatty Acid  
 Viscosity  
 Water Activity

### MISCELLANEOUS

Allergens  
 Endotoxins  
 Fats & Oils  
 Minerals  
 Residues  
 Vitamins

This is a limited list of our capabilities. Many tests are available via rapid methodology. Please inquire with an NEL Customer Service Representative.



## WATER AND WASTEWATER

*Actinomyces* spp.  
*Clostridium perfringens* MF  
*Enterococcus* spp. MF  
*Escherichia coli* MF  
 Fecal Coliform MF  
 Fecal *Streptococcus* MF  
 Fluorescent Pseudomonads MF  
 Heterotrophic Plate Count (HPC)- DRW  
 Heterotrophic Plate Count (HPC)- GW/WW  
 Iron Bacteria, Microscopic P/A  
 Total Coliform and *E. coli* enumeration  
 Total Coliform RUSH

## SOILS, SLUDGES, AND COMPOSTS

*Actinomyces*  
 Aerobic Mesophilic Sporeformers  
 Anaerobic Mesophilic Bacteria  
*E. coli* MPN  
 Fecal Coliform and *E. coli* MPN  
 Fecal Coliform MPN  
 Fecal Strep MPN  
 Heterotrophic Plate Count (HPC)  
 Mold Count (culture)  
*Salmonella* MPN  
*Salmonella* Screen  
 Total Coliform MPN  
 Total and Fecal Coliform MPN

## 40 CFR 503 SLUDGE PATHOGENS

503 Enteric Virus  
 503 Fecal Coliform MPN  
 503 *Salmonella* MPN  
 503 Viable Helminth Ova  
 Dry Weight (Total Solids)

## BIOAEROSOL TESTING

1-Plate Protocol Mold  
 1-Plate Protocol Bacteria  
 2-Plate Protocol - Bacteria & Mold  
 2-Plate Protocol - Total & Xerophilic Mold  
 Bulk Sample - Bacteria  
 Bulk Sample - Enumeration Only  
 Bulk Sample - Full analysis  
 Bulk Sample - Mold  
*Legionella pneumophila* CDC - water/swab  
 On-Site Sampling & Consultation

## MISCELLANEOUS MICROBIOLOGY

Asbestos  
 Bacteria Identification (culture)  
 Bacteria ID - Fatty acid analysis  
 Gram Stain  
 Hydrocarbon Degradation (custom)  
 Microscopic Exam  
 Mold Identification (Genus Level)  
 Spa/Pool (HPC, Coliforms, *E. coli*, Pseudo & Staph aureus)  
 Petroleum Degradation Enumeration  
 Swimmer Suitability - Sea/Fresh Water

# Frequently Asked Questions (FAQs) Ordering Information and Policies

## What are your terms of credit policy?

All products are sold on a net 30-day basis. At our discretion, shipments may be withheld from accounts with past-due balance over 60 days from billing date.

## So, how competitive are you price-wise?

Prices are taken from the price schedule that is current at the time of shipment and are designed to be competitive within the market place. Please check to make sure you are using the most current price schedule when ordering. We will match any competitor's price for competitor medias if proper documentation can be provided. Special price considerations are available based on annual usage, and can be sent to [info@nelabservices.com](mailto:info@nelabservices.com) or 800-244-8378 x304/316. Pricing can be locked in to accommodate your specific fiscal year as well.

## What is your turn-around time?

Any product that is a "basic staple" in the laboratory will usually be available immediately, if not within 7 days. All other items may require 14 working days. Special "first time ordered" customized medias may require 21 days. Standing orders are recommended to ensure medias arrive on schedule.

## What is the benefit of a standing order?

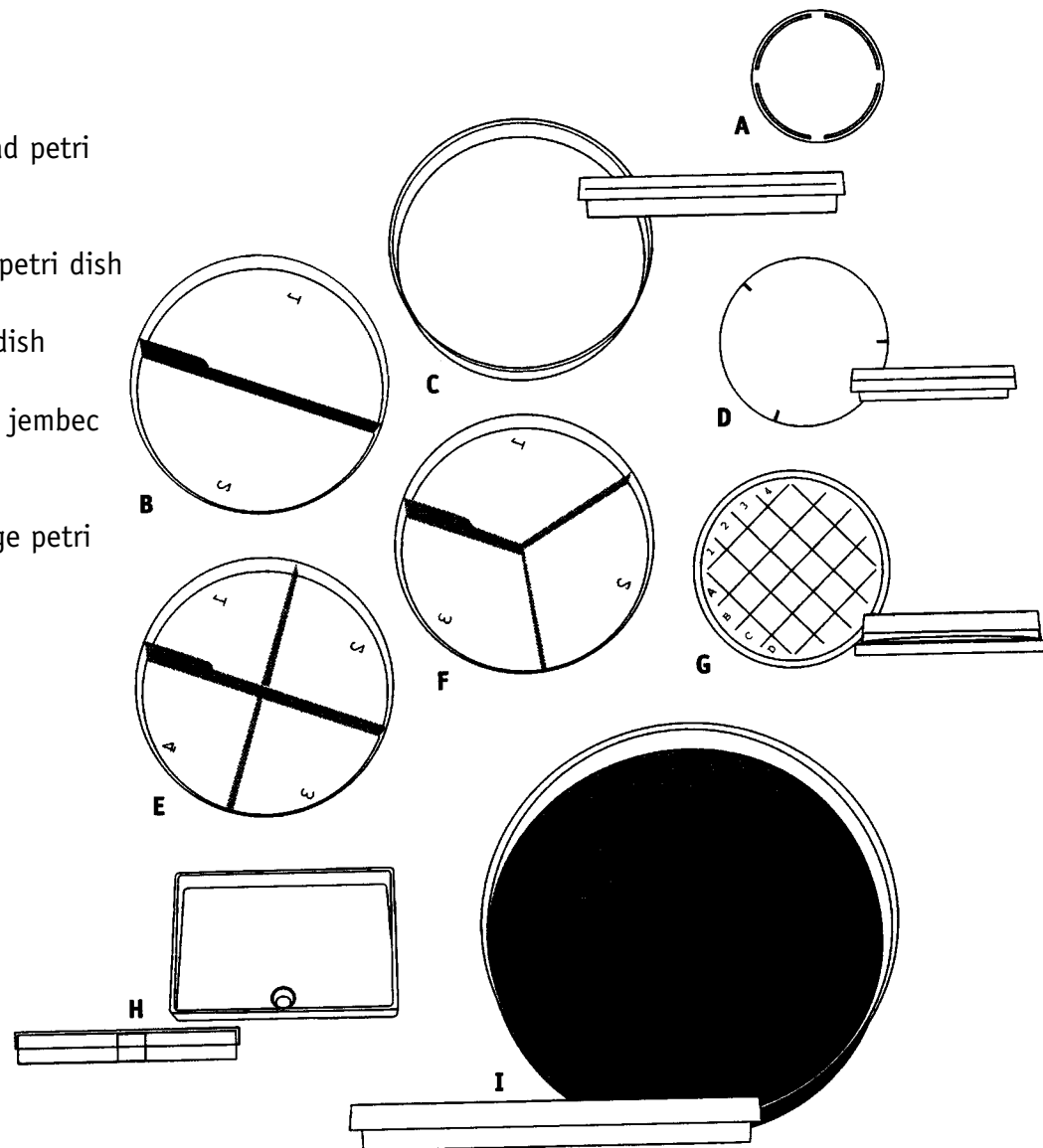
NEL will accommodate each customer's needs on an individual basis. Standing orders may be established to maintain a shipping schedule in accordance with specific needs and instructions. This method will ensure you of a continuous supply of the finest-quality materials and will eliminate valuable time spent placing routine orders. Standing order flexibility is welcome. Changes or cancellations in standing orders should be made 10 (ten) working days prior to the scheduled shipping. If the product has already been produced, the customer may be responsible for the full purchase of the item regardless. Last, a price can be guaranteed for the life of the standing order.

This is a limited list of our capabilities. Many tests are available via rapid methodology.  
 Please inquire with an NEL Customer Service Representative.



## Plate Specifications

- A** 47 mm dish
- B** 100 mm x 15 mm biplate petri dish
- C** 100 mm x 15 mm standard petri dish
- D** 60 mm x 15 mm dish
- E** 100 mm x 15 mm quad petri dish
- F** 100 mm x 15 mm tri petri dish
- G** 65 mm x 15 contact dish
- H** 75 mm x 50 x 10 mm jembec dish
- I** 150 mm x 15 mm large petri dish



## Other Laboratory Supplies

NEL can provide your lab with everything that it needs to prepare media including plates, tubes, bottles, bioloops, dehydrated powders, animal bloods and serums, QC organisms, and a wide variety of other products.

Please inquire with a customer service representative for pricing and availability. Some of the manufacturers we represent are:

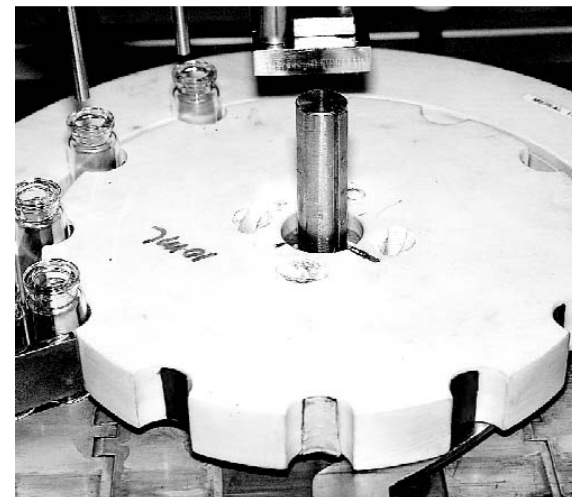
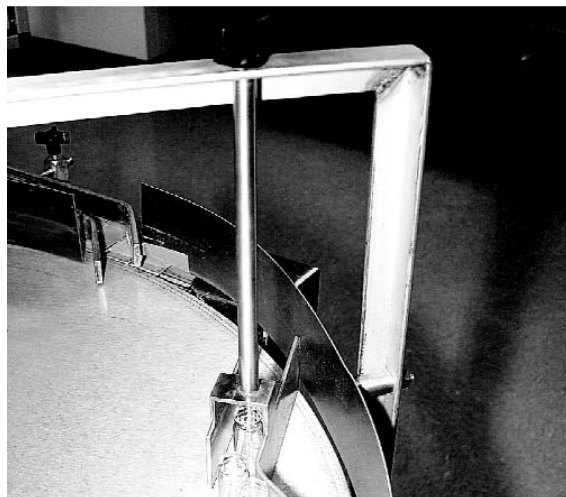
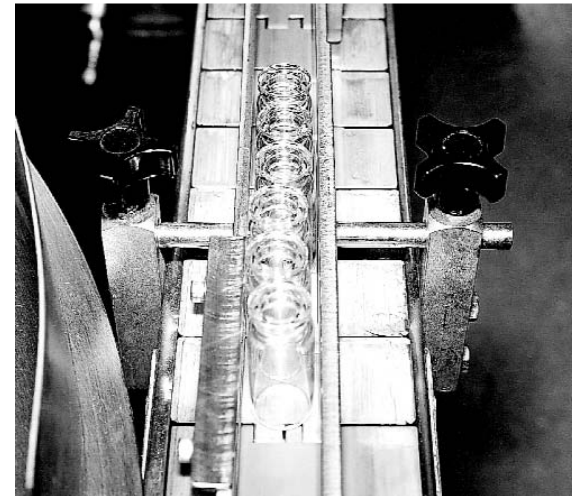
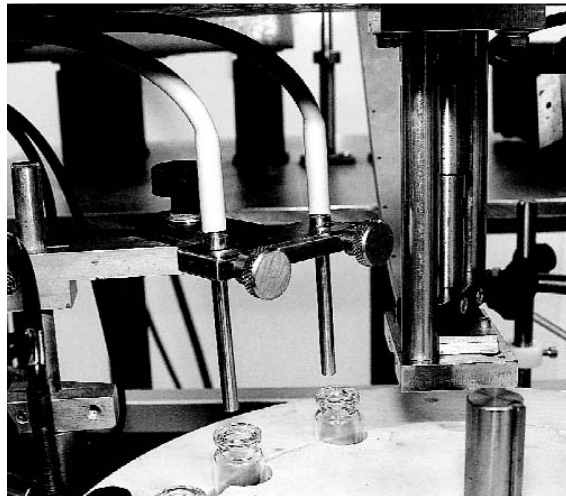
- |                          |  |
|--------------------------|--|
| Ace Glass™               | Laboratory Supplies  |
| Acumedia/Neogen™         | Dehydrated Media   |
| Astral Diagnostics Inc™  | Diagnostic Stains and Reagents   |
| Becton Dickinson™        | Laboratory Supplies  |
| Bioscience™              | Air Samplers   |
| Fisher Scientific™       | Laboratory Supplies  |
| Gibson Laboratories Inc™ | Quality Control Organisms  |
| Microbiologics™          | Lyophilized Microorganisms and Slide Preparations                              |
| Quad 5™                  | Animal Bloods and Serums   |
| VWR™                     | Laboratory Supplies - and NEL media is also available through this distributor |

NEL represents many other vendors, so please call for additional laboratory products and supplies.



## Vial Filling

- Glass, plastic, or custom containers
- Current fill range: 5 mL to 30 mL
- Assorted cap options (crimp caps w/ stoppers, twist tops, various colors, etc.)
- Custom packaging
- Fill with any color dye, diluent, broth, water, saline, etc.
- Private labeling capabilities
- NEL will put together your kits, including vaccine kits
- Current clients include pharmaceutical companies, food and beverage companies, biomedical companies, and poultry vaccine companies
- Over 35 years of experience
- Short product turn around time
- Please audit/tour our facility any time



## Prepared Culture Media: Plated

**Note: the products listed are available in packages of 10 or cases of 100. Please contact us for any special packaging requests and shelf life information.**

ITEM	SIZE	ITEM NO.
2X YT AGAR 20 ML	100 MM X 15 MM STANDARD PETRI DISH	P1900
2X YT AGAR 75 ML (DOUBLE BAGGED)	150 MM X 15 MM LARGE PETRI DISH	P2200
<b>A</b>		
ACRIFLAVIN AGAR 20 ML	100 MM X 15 MM STANDARD PETRI DISH	P1030
ANAEROBIC BACTEROIDES BILE ESCULIN AGAR 20 ML	100 MM X 15 MM STANDARD PETRI DISH	P5015
ANAEROBIC BLOOD AGAR (CDC) 20 ML	100 MM X 15 MM STANDARD PETRI DISH	P5010
ANAEROBIC BLOOD AGAR (CDC) 75 ML	150 MM X 15 MM LARGE PETRI DISH	P2550
ANAEROBIC BLOOD AGAR W/ KANAMYCIN & VANCOMYCIN 20 ML	100 MM X 15 MM STANDARD PETRI DISH	P5011
ANAEROBIC CNA BLOOD AGAR 20 ML	100 MM X 15 MM STANDARD PETRI DISH	P5030
ANAEROBIC CNA AGAR // ANAEROBIC LAKED BLOOD AGAR W/ KANAMYCIN & VANCOMYCIN	100 MM X 15 MM BIPLATE PETRI DISH	P5120
ANAEROBIC COLUMBIA AGAR W/ SHEEP BLOOD 20 ML	100 MM X 15 MM STANDARD PETRI DISH	P5020
ANAEROBIC LAKED AGAR W/ KANAMYCIN & VANCOMYCIN 20 ML	100X 15 MM STANDARD PETRI DISH	P5050
ANAEROBIC LAKED BLOOD AGAR W/ KANAMYCIN & VANCOMYCIN // ANAEROBIC CNA AGAR	100 MM X 15 MM BIPLATE PETRI DISH	P5120
ANAEROBIC LECITHIN-LACTOSE AGAR 20 ML	100 MM X 15 MM STANDARD PETRI DISH	P5060
ANTIBIOTIC MEDIUM #1 20ML	100 MM X 15 MM STANDARD PETRI DISH	P1010
<b>B</b>		
BAIRD PARKER AGAR W/ EGG YOLK & TELLURITE 20 ML	100 MM X 15 MM STANDARD PETRI DISH	P1040
BAIRD PARKER AGAR // VOGEL JOHNSON AGAR // MANNITOL SALT AGAR // CETRIMIDE AGAR	100 X 15MM QUAD PETRI DISH	P3707
BCYE AGAR 20 ML	100 MM X 15 MM STANDARD PETRI DISH	P1045
BCYE AGAR // BCYE AGAR	100 MM X 15 MM BIPLATE PETRI DISH	P3013
BIGGY AGAR 20 ML	100 MM X 15 MM STANDARD PETRI DISH	P1060
BISMUTH SULFITE AGAR 20 ML	100 MM X 15 MM STANDARD PETRI DISH	P1064
BISMUTH SULFITE AGAR // BISMUTH SULFITE AGAR	100 MM X 15 MM BIPLATE PETRI DISH	P3015
BISMUTH SULFITE AGAR // XLD AGAR // HEKTOEN ENTERIC AGAR	100MM X 15MM TRIPLATE PETRI DISH	P3709
BILE ESCULIN AGAR 20 ML	100 MM X 15 MM STANDARD PETRI DISH	P1050
BISMUTH SULFITE AGAR // BRILLIANT GREEN AGAR // XLD AGAR	100 MM X 15 MM TRIPLATE PETRI DISH	P3702
BORDET GENDOU AGAR W/15% SHEEP BLOOD 20 ML	100 MM X 15 MM STANDARD PETRI DISH	P1070
BRAIN HEART INFUSION AGAR 20 ML	100 MM X 15 MM STANDARD PETRI DISH	P1122
BRAIN HEART INFUSION AGAR 20 ML	100 MM X 15 MM STANDARD PETRI DISH (NO PLATE STAMP)	P1122-A
BRAIN HEART INFUSION AGAR 30 ML	100 MM X 15 MM STANDARD PETRI DISH	P1121
BRAIN HEART INFUSION W/ 1.15% NACL AGAR 20 ML	100 MM X 15 MM STANDARD PETRI DISH	P1129
BRAIN HEART INFUSION AGAR W/ DEOXYCHOLATE ACID 20 ML	100 MM X 15 MM STANDARD PETRI DISH	P1127
BRAIN HEART INFUSION AGAR W/ NACL 20 ML	100 MM X 15 MM STANDARD PETRI DISH	P1126
BRAIN HEART INFUSION AGAR W/ NALIDIXIC ACID 20 ML	100 MM X 15 MM STANDARD PETRI DISH	P1118
BRAIN HEART INFUSION AGAR W/ TETRACYCLINE 20 ML	100 MM X 15 MM STANDARD PETRI DISH	P1124
BRILLIANT GREEN AGAR 20 ML	100 MM X 15 MM STANDARD PETRI DISH	P1103
BRILLIANT GREEN AGAR // BRILLIANT GREEN AGAR	100 MM X 15 MM BIPLATE PETRI DISH	P3020
BRILLIANT GREEN AGAR // BISMUTH SULFITE AGAR // XLD AGAR	100 MM X 15 MM TRIPLATE PETRI DISH	P3702
BRILLIANT GREEN AGAR W/ NOVIOBIOCIN // XLT-4 AGAR	100 MM X 15 MM BIPLATE PETRI DISH	P3711
BRILLIANT GREEN AGAR W/ NALIDIXIC ACID 20 ML	100 MM X 15 MM STANDARD PETRI DISH	P1095
BRILLIANT GREEN AGAR W/ NALIDIXIC ACID 100 MCG/ML & NOVIOBIOCIN 15 MCG/ML 20 ML	100 MM X 15 MM STANDARD PETRI DISH	P1105
BRILLIANT GREEN AGAR W/ NOVIOBIOCIN 15 MG/ML 20 ML	100 MM X 15 MM STANDARD PETRI DISH	P1104
BRILLIANT GREEN AGAR // PHENOL RED LACTOSE AGAR	100 X 15MM BIPLATE PETRI DISH	P3713
BRILLIANT GREEN AGAR W/ SULFADIAZINE 20 ML	100 MM X 15 MM STANDARD PETRI DISH	P1090
BRUCELLA AGAR 20 ML	100 MM X 15 MM STANDARD PETRI DISH	P1111
BRUCELLA AGAR W/5% HORSE BLOOD 20 ML	100 MM X 15 MM STANDARD PETRI DISH	P1106



## Prepared Culture Media: Plated

ITEM	SIZE	ITEM NO.
BRUCELLA AGAR W/5% SHEEP BLOOD, HEMIN & VITAMIN K 20 ML	100 MM X 15 MM STANDARD PETRI DISH	P1108
BUGM W/5% SHEEP BLOOD 20 ML	100 MM X 15 MM STANDARD PETRI DISH	P1128
<b>C</b>		
CAA/YNB 20ML	100 MM X 15 MM STANDARD PETRI DISH	P1155
CAMPY-BAP (BLASER) 20 ML	100 MM X 15 MM STANDARD PETRI DISH	P1120
CASEIN STARCH AGAR 20 ML	100 MM X 15 MM STANDARD PETRI DISH	P1307
CCVC AGAR 20 ML	100 MM X 15 MM STANDARD PETRI DISH	P1303
CETRIMIDE AGAR 10 ML	60 MM X 15 MM PETRI DISH	P6010
CETRIMIDE AGAR 20 ML	100 MM X 15 MM STANDARD PETRI DISH	P1130
CETRIMIDE AGAR 25 ML	100 MM X 15 MM STANDARD PETRI DISH	P1131
CETRIMIDE AGAR // CETRIMIDE AGAR	100 MM X 15 MM BIPLATE PETRI DISH	P3120
CETRIMIDE AGAR // MACCONKEY AGAR // TRYPTIC SOY AGAR W/ 4% SHEEP BLOOD	100 MM X 15 MM TRIPLATE PETRI DISH	P3712
CETRIMIDE AGAR // MACCONKEY AGAR // VOGEL JOHNSON AGAR	100 MM X 15 MM TRIPLATE PETRI DISH	P3705
CETRIMIDE AGAR // MANNITOL SALT AGAR	100 MM X 15 MM BIPLATE PETRI DISH	P3130
CETRIMIDE AGAR // MANNITOL SALT AGAR // VOGEL JOHNSON AGAR // BAIRD	100 MM X 15 MM QUADPLATE PETRI DISH	P3707
CHOCOLATE AGAR W/ ENRICHMENT 20 ML	100 MM X 15 MM STANDARD PETRI DISH	P1150
CHOCOLATE AGAR W/ ENRICHMENT // CHOCOLATE AGAR W/ ENRICHMENT	100 X 15 MM BIPLATE PETRI DISH	P3150
CHOCOLATE AGAR W/ ENRICHMENT // TSA W/5% SHEEP BLOOD AGAR	100 MM X 15 MM BIPLATE PETRI DISH	P3025
CIN (YERSINIA ) AGAR 20 ML	100 MM X 15 MM STANDARD PETRI DISH	P1160
CLED AGAR 20 ML	100 MM X 15 MM STANDARD PETRI DISH	P1200
CM AGAR (CORNEYBACTERIUM MEDIUM) 14 ML	65 MM X 15 MM CONTACT DISH	P4003
COLUMBIA CNA AGAR // MACCONKEY AGAR	100 MM X 15 MM BIPLATE PETRI DISH	P3160
COLUMBIA BLOOD AGAR W/ 5% SHEEP BLOOD 20 ML	100 MM X 15 MM STANDARD PETRI DISH	P1170
COLUMBIA AGAR W/ 5% SHEEP BLOOD & GENTAMYCIN 20 ML	100 MM X 15 MM STANDARD PETRI DISH	P1255
COLUMBIA CNA AGAR W/5% SHEEP BLOOD 20 ML	100 MM X 15 MM STANDARD PETRI DISH	P1250
CORN MEAL AGAR W/ POLYSORBATE 80 20 ML	100 MM X 15 MM STANDARD PETRI DISH	P1270
CZAPEK'S SUCROSE AGAR 14 ML	65 MM X 15 MM CONTACT DISH	P4004
CZAPEK'S YEAST EXTRACT AGAR 30 ML	100 MM X 15 MM STANDARD PETRI DISH	P1109
CZAPEK YEAST EXTRACT AGAR W/CELLULOSE 30 ML	100 MM X 15 MM STANDARD PETRI DISH	P1075
CZAPEK YEAST EXTRACT AGAR W/20% SUCROSE 30 ML	100 MM X 15 MM STANDARD PETRI DISH	P1085

<b>D</b>		
DERMATOPHYTE TEST MEDIUM (DTM) 20 ML	100 MM X 15 MM STANDARD PETRI DISH	P5000
D/E NEUTRALIZING AGAR 14 ML	65 MM X 15 MM CONTACT DISH	P4005
DEOXYCHOLATE AGAR 20 ML	100 MM X 15 MM STANDARD PETRI DISH	P1280
DICHLORAN GLYCEROL AGAR (DG18) 20 ML	100 MM X 15 MM STANDARD PETRI DISH	P1295
DICHLORAN GLYCEROL AGAR (DG18) 30 ML	100 MM X 15 MM STANDARD PETRI DISH	P1298
DICHLORAN ROSE BENGAL CHLORTETRACYCLINE AGAR DEEP (DRBC) 20 ML	100X15 MM STANDARD PETRI DISH	P1290

<b>E</b>		
EDWARDS MEDIUM W/5% SHEEP BLOOD 20ML	100 MM X 15 MM STANDARD PETRI DISH	P1096
EMB (LEVINE ) AGAR 14 ML	65 MM X 15 MM CONTACT DISH	P4060
EMB (LEVINE) AGAR 20 ML	100 MM X 15 MM STANDARD PETRI DISH	P1301
EMB (LEVINE) AGAR W/ LECITHIN & POLYSORBATE 80 14 ML	65 MM X 15 MM CONTACT DISH	P4061
EMB (LEVINE) AGAR // CLED AGAR	100 MM X 15 MM BIPLATE PETRI DISH	P3180
EMB (LEVINE) AGAR // MACCONKEY AGAR	100 MM X 15 MM BIPLATE PETRI DISH	P3060
EMB (LEVINE) AGAR // TRYPTIC SOY AGAR	100 MM X 15 MM BIPLATE PETRI DISH	P3056

## Microbiological Reagents

ITEM	SIZE	ITEM NO.
V-P REAGENT A (a-NAPHTHOL) 25 ML	(1 OZ. AMBER BOTTLE W/ EYE DROPPER)	X1100
V-P REAGENT B (40% KOH) 25 ML	(1 OZ. AMBER BOTTLE W/ EYE DROPPER)	X1225
ERLICH'S REAGENT 25 ML	(1 OZ. AMBER BOTTLE W/ EYE DROPPER)	X1140
KOVAC'S REAGENT (INDOLE) 25 ML	(1 OZ. AMBER BOTTLE W/ EYE DROPPER)	X1150
MINERAL OIL 25 ML	(1 OZ. AMBER BOTTLE W/ EYE DROPPER)	X1200
NITRATE REAGENT A (SULFANILIC ACID) 25 ML	(1 OZ. AMBER BOTTLE W/ EYE DROPPER)	X1250
NITRATE REAGENT B (DIMETHYL-1-NAPHTHYLAMINE) 25 ML	(1 OZ. AMBER BOTTLE W/ EYE DROPPER)	X1260
OXI-TEST (OXIDASE REAGENT) 25 ML	(1 OZ. AMBER BOTTLE W/ EYE DROPPER)	X1265
FERRIC CHLORIDE 10% 25 ML	(1 OZ. AMBER BOTTLE W/ EYE DROPPER)	X1270
POTASSIUM HYDROXIDE 10% (KOH PREP FOR MYCOLOGY) 25 ML	(1 OZ. AMBER BOTTLE W/ EYE DROPPER)	X1275
POTASSIUM HYDROXIDE 20% (FOR MICRO ID) 25 ML	(1 OZ. AMBER BOTTLE W/ EYE DROPPER)	X1276
RAPID INDOLE (SPOT INDOLE REAGENT) 25 ML	(1 OZ. AMBER BOTTLE W/ EYE DROPPER)	X1285
DEOXYCHOLATE 2% 25 ML	(1 OZ. AMBER BOTTLE W/ EYE DROPPER)	X1290
DEOXYCHOLATE 10% 25 ML	(1 OZ. AMBER BOTTLE W/ EYE DROPPER)	X1295
IODINE SOLUTION (FOR TT BROTH) 25 ML	(1 OZ. AMBER BOTTLE W/ EYE DROPPER)	X1300
IODINE SOLUTION (FOR TT BROTH) 250 ML	(8 OZ. AMBER BOSTON ROUND)	X1350
METHYL RED INDICATOR 25 ML	(1 OZ. AMBER BOSTON ROUND)	X1500
UREA POWDER (SUBSTRATE) 100GMS	(250 ML PLASTIC BOTTLE)	X1600
PHENOL RED SOLUTION 100ML	(8 OZ. BOSTON ROUND)	X1700
.1N HCL SOLUTION 100ML (HAZARDOUS MATERIAL FEE)	(1 OZ. BOSTON ROUND)	X1800



## Prepared Culture Media: Bottles

ITEM	SIZE	ITEM NO.
TRYPTIC SOY BROTH 100 ML FILL (TWO WEEK USP QC)	4 OZ. BOSTON ROUND w/22-400 BLK CAP	B2027
TRYPTIC SOY BROTH 100 ML FILL (TWO WEEK USP QC)	8 OZ. PARAGON BOTTLE	B2028
TRYPTIC SOY BROTH 100 ML FILL (TWO WEEK USP QC)	(4oz) 100 ML SERUM BOTTLE W/RUBBER STOPPER & ALUM CRIMP CAP	B2110
TRYPTIC SOY BROTH 125 ML FILL (TWO WEEK USP QC)	8 OZ. PARAGON BOTTLE	B2034
TRYPTIC SOY BROTH 200 ML FILL (TWO WEEK USP QC)	8 OZ. PARAGON BOTTLE W/53MM LUG CAP	B2104
TRYPTIC SOY BROTH 200 ML FILL (TWO WEEK USP QC)	16 OZ. PARAGON BOTTLE W/63MM LUG CAP	B2105
TRYPTIC SOY BROTH 220 ML FILL (TWO WEEK USP QC)	8 OZ. PARAGON BOTTLE W/53MM LUG CAP	B2026
TRYPTIC SOY BROTH 225 ML FILL (TWO WEEK USP QC)	16 OZ. PARAGON BOTTLE W/63MM LUG CAP	B2100
TRYPTIC SOY BROTH 250 ML FILL (TWO WEEK USP QC)	16 OZ. PARAGON BOTTLE W/63MM LUG CAP	B2101
TRYPTIC SOY BROTH 225 ML FILL (TWO WEEK USP QC)	500 ML SERUM BOTTLE W/RUBBER STOPPER & ALUM CRIMP CAP	B2038
TRYPTIC SOY BROTH 300 ML FILL (TWO WEEK USP QC)	16 OZ. PARAGON BOTTLE W/63MM LUG CAP	B2106
TRYPTIC SOY BROTH 300 ML FILL (TWO WEEK USP QC)	500 ML BOTTLE W/33-430 BLACK SCREW CAP	B2033
TRYPTIC SOY BROTH 300 ML FILL (TWO WEEK USP QC)	500 ML BOTTLE W/33-430 BLACK SCREW CAP W/RUBBER SEPTUM	B2039
TRYPTIC SOY BROTH 500 ML FILL (TWO WEEK USP QC)	500 ML BOTTLE W/33-430 BLACK SCREW CAP	B2115
TRYPTIC SOY BROTH 500 ML FILL (TWO WEEK USP QC)	1L BOTTLE W/33-430 BLACK SCREW CAP	B2125
TRYPTIC SOY BROTH 500 ML FILL (TWO WEEK USP QC)	500 ML SERUM BOTTLE W/RUBBER STOPPER & ALUM CRIMP CAP	B2037
TRYPTIC SOY BROTH 990 ML FILL (TWO WEEK USP QC)	1L BOTTLE W/33-430 BLACK SCREW CAP	B2120
TRYPTIC SOY BROTH 1000 ML FILL (TWO WEEK USP QC)	1L BOTTLE W/33-430 BLACK SCREW CAP	B2200
TRYPTIC SOY BROTH 1688 ML FILL (TWO WEEK USP QC)	128 OZ. BOTTLE (WIDE MOUTH, GALLON) 89MM CAP	B2302
TRYPTIC SOY BROTH 2600 ML FILL (TWO WEEK USP QC)	128 OZ. BOTTLE (WIDE MOUTH, GALLON) 89MM CAP	B2300
TRYPTIC SOY BROTH 3600 ML FILL (TWO WEEK USP QC)	128 OZ. BOTTLE (WIDE MOUTH, GALLON) 89MM CAP	B2301
TRYPTIC SOY BROTH W/ LECITHIN & POLYSORBATE 80 30 ML FILL (TWO WEEK USP QC)	4 OZ. BOSTON ROUND w/22-400 BLK CAP	B2111
TRYPTIC SOY BROTH W/ LECITHIN & POLYSORBATE 80 40 ML FILL (TWO WEEK USP QC)	4 OZ. BOSTON ROUND w/22-400 BLK CAP	B2112
TRYPTIC SOY BROTH W/ LECITHIN & POLYSORBATE 80 90 ML FILL (TWO WEEK USP QC)	4 OZ. BOSTON ROUND w/22-400 BLK CAP	B2046
TRYPTIC SOY BROTH W/ LECITHIN & POLYSORBATE 80 90 ML FILL (TWO WEEK USP QC)	8 OZ. PARAGON BOTTLE 53MM LUG CAP	B2113
TRYPTIC SOY BROTH W/ LECITHIN & POLYSORBATE 80 100 ML FILL (TWO WEEK USP QC)	4 OZ. BOSTON ROUND w/22-400 BLK CAP	B2117
TRYPTIC SOY BROTH W/ LECITHIN & POLYSORBATE 80 100 ML FILL (TWO WEEK USP QC)	8 OZ. PARAGON BOTTLE 53MM LUG CAP	B2118
TRYPTIC SOY BROTH W/ LECITHIN & POLYSORBATE 80 225 ML FILL (TWO WEEK USP QC)	16 OZ. PARAGON BOTTLE 63MM LUG CAP	B2114
TRYPTIC SOY BROTH W/ LECITHIN & POLYSORBATE 80 300 ML FILL (TWO WEEK USP QC)	500ML BOTTLE W/33-330 BLACK CAP	B2032
TRYPTIC SOY BROTH W/ LECITHIN & POLYSORBATE 80 1000 ML FILL (TWO WEEK USP QC)	1L BOTTLE W/33-430 BLACK SCREW CAP	B7053
TRYPTIC SOY BROTH W/ YEAST EXTRACT 0.6% 225 ML FILL (TWO WEEK USP QC)	16 OZ. PARAGON BOTTLE 63MM LUG CAP	B2400
<b>U</b>		
UREAPLASMA BROTH 100 ML FILL	4 OZ. BOSTON ROUND w/22-400 BLK CAP	B1663
UREAPLASMA BROTH 500 ML FILL	500 ML BOTTLE W/33-430 BLACK SCREW CAP	B1661
UVM MODIFIED LISTERIA BROTH (PRIMARY) 225 ML FILL	16 OZ. PARAGON BOTTLE W/63MM LUG CAP	B2600
<b>V</b>		
VIOLET RED BILE AGAR 200 ML FILL	8 OZ BOSTON ROUND BOTTLE W/24-400 BLACK SCREW CAP	B3900
VIOLET RED BILE AGAR 500 ML FILL	1L BOTTLE W/33-430 BLACK SCREW CAP	B3910
<b>Y</b>		
YEAST BR(MODIFIED VAN NEIL'S) 1000 ML	1L BOTTLE W/33-430 BLACK SCREW CAP	B1030

## Prepared Culture Media: Plated

ITEM	SIZE	ITEM NO.
EMB (LEVINE) AGAR // TRYPTIC SOY AGAR W/5% SHEEP BLOOD	100 MM X 15 MM BIPLATE PETRI DISH	P3055
ENDO AGAR 20 ML	100 MM X 15 MM STANDARD PETRI DISH	P1305
<b>F</b>		
FURAZOLIDONE 20 ML (FTO) AGAR	100 MM X 15 MM STANDARD PETRI DISH	P1302
<b>G</b>		
GBS SCREENING MEDIUM 20 ML	100 MM X 15 MM STANDARD PETRI DISH	P8000
GC KELLOGG AGAR 75 ML	150 MM X 15 MM LARGE PETRI DISH	P2150
GLYCEROL NITRATE AGAR 25% (G25-N) 30 ML	100 MM X 15 MM STANDARD PETRI DISH	P1485
<b>H</b>		
HEKTOEN ENTERIC AGAR 20 ML	100 MM X 15 MM STANDARD PETRI DISH	P1350
HEKTOEN ENTERIC AGAR // HEKTOEN ENTERIC AGAR	100 MM X 15 MM BIPLATE PETRI DISH	P3190
HEKTOEN ENTERIC AGAR // XLD AGAR	100 MM X 15 MM BIPLATE PETRI DISH	P3200
HEKTOEN ENTERIC AGAR // XLD AGAR // BISMUTH SULFITE AGAR	100 MM X 15 MM TRIPLATE PETRI DISH	P3709
HORSE BLOOD OVERLAY MEDIUM (BOTTOM LAYER W/COLUMBIA BA BASE) (TOP LAYER W/COLUMBIA BA BASE & DEFIB. HORSE BLOOD)	100 MM X 15 MM STANDARD PETRI DISH	P1315
<b>I</b>		
INHIBITORY MOLD AGAR 30 ML	100 MM X 15 MM STANDARD PETRI DISH	P1099
<b>K</b>		
KF STREPTOCOCCUS AGAR 20 ML	100 MM X 15 MM STANDARD PETRI DISH	P1352
<b>L</b>		
L.A.S.T. PLATES (STREPTOMYCIN ASSAY AGAR W/ YEAST EXTRACT) 6.1 ML (ASK ABOUT ADDITIONAL SUPPLIES)	60 MM X 15 MM PETRI DISH IN AN INDIVIDUAL ZIP LOCK™ BAG	P9001
LB AGAR (LENNOX) 20 ML	100 MM X 15 MM STANDARD PETRI DISH	P1360
LB AGAR (LENNOX) W/100 UG/ML AMPICILLIN 20 ML	100 MM X 15 MM STANDARD PETRI DISH	P1375
LB AGAR (MILLER) 20 ML	100 MM X 15 MM STANDARD PETRI DISH	P1370
LB AGAR (MILLER) W/20 UG/ML KANAMYCIN 20 ML	100 MM X 15 MM STANDARD PETRI DISH	P1372
LB AGAR (MILLER) W/25 UG/ML KANAMYCIN 20 ML	100 MM X 15 MM STANDARD PETRI DISH	P1376
LB AGAR (MILLER) W/30 UG/ML KANAMYCIN 20 ML	100 MM X 15 MM STANDARD PETRI DISH	P1373
LB AGAR (MILLER) W/40 UG/ML KANAMYCIN 20 ML	100 MM X 15 MM STANDARD PETRI DISH	P1374
LB AGAR (MILLER) W/ 50 UG/ML KANAMYCIN 20 ML	100 MM X 15 MM STANDARD PETRI DISH	P1371
LETHEEN AGAR 14 ML	65 MM X 15 MM CONTACT DISH	P4008
LETHEEN AGAR 20 ML	100 MM X 15 MM STANDARD PETRI DISH	P1380
LYSINE AGAR 10 ML	60 MM X 15 MM PETRI DISH	P6022
<b>M</b>		
M- ENDO LES AGAR 20 ML	100 MM X 15 MM STANDARD PETRI DISH	P1306
M-ENDO LES AGAR 10 ML	60 MM X 15 MM PETRI DISH	P6020
M-ENTEROCOCCUS AGAR 20 ML	100 MM X 15 MM STANDARD PETRI DISH	P1382
M HETEROTROPHIC PLATE COUNT AGAR (MHPC) 20 ML	100 MM X 15 MM STANDARD PETRI DISH	P1320
M-TEC AGAR 5 - 6 ML	47 MM X 15 MM PETRI DISH	P7300
MACCONKEY AGAR 20 ML	100 MM X 15 MM STANDARD PETRI DISH	P1400
MACCONKEY AGAR (SORBITOL) 20 ML	100 MM X 15 MM STANDARD PETRI DISH	P1405



## Prepared Culture Media: Plated

ITEM	SIZE	ITEM NO.
MACCONKEY AGAR // CETRIMIDE AGAR // VOGEL JOHNSON AGAR	100 MM X 15 MM TRIPLATE PETRI DISH	P3705
MACCONKEY AGAR // CLED AGAR	100 MM X 15 MM BIPLATE PETRI DISH	P3165
MACCONKEY AGAR // C N A AGAR	100 MM X 15 MM BIPLATE PETRI DISH	P3160
MACCONKEY AGAR // EMB (LEVINE) AGAR	100 MM X 15 MM BIPLATE PETRI DISH	P3060
MACCONKEY AGAR // TRYPTIC SOY AGAR	100 MM X 15 MM BIPLATE PETRI DISH	P3110
MACCONKEY AGAR // TRYPTIC SOY AGAR W/5% SHEEP BLOOD	100 MM X 15 MM BIPLATE PETRI DISH	P3100
MACCONKEY AGAR II W/ LECITHIN & POLYSORBATE 80 14 ML	65 MM X 15 MM CONTACT DISH	P4075
MALT EXTRACT AGAR 14 ML	65 MM X 15 MM CONTACT DISH	P4090
MALT EXTRACT AGAR (ACGIH) 14 ML	65 MM X 15 MM CONTACT DISH	P4091
MALT EXTRACT AGAR (ACGIH) 30 ML	100 MM X 15 MM STANDARD PETRI DISH	P1425
MALT EXTRACT AGAR 2% 30 ML	100 MM X 15 MM STANDARD PETRI DISH	P1426
MALT EXTRACT AGAR W/L&P80 14ML	65 MM X 15 MM CONTACT DISH	P4092
MANNITOL SALT AGAR 14 ML	65 MM X 15 MM CONTACT DISH	P4070
MANNITOL SALT AGAR 20 ML	100 MM X 15 MM STANDARD PETRI DISH	P1410
MANNITOL SALT AGAR // CETRIMIDE AGAR	100 MM X 15 MM BIPLATE PETRI DISH	P3130
CETRIMIDE AGAR // MANNITOL SALT AGAR // VOGEL JOHNSON AGAR // BAIRD PARKER	100 MM X 15 MM QUADPLATE PETRI DISH	P3707
MANNITOL SALT AGAR // VOGEL JOHNSON AGAR	100 MM X 15 MM BIPLATE PETRI DISH	P3680
MINIMAL GLUCOSE AGAR 30 ML	100 MM X 15 MM STANDARD PETRI DISH	P1430
MINIMAL GLUCOSE AGAR W/2% BROMCRESOL PURPLE SOLUTION 30 ML	100X15 MM STANDARD PETRI DISH	P1430-P
MINIMAL GLUCOSE AGAR W/4% PHENOL RED SOLUTION 30 ML	100 MM X 15 MM STANDARD PETRI DISH	P1430-R
MITIS SALIVARIUS AGAR 20 ML	100 MM X 15 MM STANDARD PETRI DISH	P9057
MITIS SALIVARIUS AGAR W/ SUCROSE 20 ML	100 MM X 15 MM STANDARD PETRI DISH	P9058
MODIFIED OXFORD MEDIA 20 ML	100 MM X 15 MM STANDARD PETRI DISH	P1452
M PAC AGAR 10ML	60 X 15 MM PETRI DISH	P6080-PS
MM AGAR 20ML	100 MM X 15 MM STANDARD PETRI DISH	P1424
MRS AGAR (LACTOBACILLI) 20 ML	100 MM X 15 MM STANDARD PETRI DISH	P1427
M-S AGAR (MICROCOCCUS-STAPH) MEDIUM 20 ML	100 MM X 15 MM STANDARD PETRI DISH	P1455
MUELLER HINTON AGAR 24 ML	100 MM X 15 MM STANDARD PETRI DISH	P1460
MUELLER HINTON AGAR 30 ML	100 MM X 100 MM SQUARE PETRI DISH	P1285
MUELLER HINTON AGAR 75ML	150 MM X 15 MM LARGE PETRI DISH	P2000
MUELLER HINTON AGAR W/5% NACL & OXACILLIN	100 MM X 15 MM STANDARD PETRI DISH	P1465
MUELLER HINTON AGAR W/5% SHEEP BLOOD 24 ML	100 MM X 15 MM STANDARD PETRI DISH	P1470
MUELLER HINTON AGAR W/5% SHEEP BLOOD 75 ML	150 MM X 15 MM LARGE PETRI DISH	P2050
MYCOLOGY AGAR W/ ANTIBIOTICS 20 ML	100 MM X 15 MM STANDARD PETRI DISH	P1490

## N

NEUTRAL CREATINE SUCROSE AGAR (CSN) 30 ML	100 MM X 15 MM STANDARD PETRI DISH	P1480
NUTRIENT AGAR 20 ML	100 MM X 15 MM STANDARD PETRI DISH	P1491
NUTRIENT AGAR W/ 0.01% MNSO4 65ML	150MM X 15MM LARGE PETRI DISH	P2175
NUTRIENT AGAR W/DEXTROSE 5G/L 30ML	100 MM X 15 MM STANDARD PETRI DISH	P1494
NUTRIENT AGAR W/ LECITHIN & POLYSORBATE 80 14 ML	60 MM X 15 MM CONTACT PLATE	P4010
NUTRIENT AGAR W/ MANGANESE 20 ML	100 MM X 15 MM STANDARD PETRI DISH	P1492
NUTRIENT AGAR W/ MUG 20 ML	100 MM X 15 MM STANDARD PETRI DISH	P1493
NUTRIENT AGAR W/ MUG 10 ML	60 MM X 15 MM PETRI DISH	P6025

## O

OPBBL AGAR 20 ML	100 MM X 15 MM STANDARD PETRI DISH	P1497
ORANGE SERUM AGAR 20 ML	100 MM X 15 MM STANDARD PETRI DISH	P1495

## Prepared Culture Media: Bottles

ITEM	SIZE	ITEM NO.
<b>S</b>		
SABOURAUD DEXTROSE AGAR 10 ML F ILL	1 OZ. BOTTLE (MYCOLOGY)	M5150
SABOURAUD DEXTROSE AGAR 300 ML FILL	500 ML BOTTLE W/33-430 BLACK SCREW CAP	B3085
SABOURAUD DEXTROSE AGAR 500 ML FILL	500 ML BOTTLE W/33-430 BLACK SCREW CAP	B3080
SABOURAUD DEXTROSE AGAR 500 ML FILL	1L BOTTLE W/33-430 BLACK SCREW CAP	B3081
SABOURAUD DEXTROSE AGAR W/ CHLORAMPHENICOL 100 ML FILL	8 OZ BOSTON ROUND BOTTLE W/24-400 BLACK SCREW CAP	B3070
SABOURAUD DEXTROSE AGAR W/ CHLORAMPHENICOL 300 ML FILL	500 ML BOTTLE W/33-430 BLACK SCREW CAP	B3072
SABOURAUD DEXTROSE AGAR W/ CHLORAMPHENICOL 400 ML FILL	500 ML BOTTLE W/33-430 BLACK SCREW CAP	B3073
SABOURAUD DEXTROSE AGAR W/ LECITHIN & POLYSORBATE 80 300 ML FILL	500 ML BOTTLE W/33-430 BLACK SCREW CAP	B3086
SABOURAUD DEXTROSE BROTH 1000 ML	1L BOTTLE W/33-430 BLACK SCREW CAP	B3125
SALINE 0.85% 90 ML FILL	4 OZ. BOSTON ROUND w/22-400 BLK CAP	B3098
SALINE 0.85% 100 ML FILL	4 OZ. BOSTON ROUND w/22-400 BLK CAP	B3094
SALINE 0.85% 200 ML FILL	8 OZ BOSTON ROUND BOTTLE W/24-400 BLACK SCREW CAP	B3095
SALINE 0.85% 300 ML FILL	500 ML BOTTLE W/33-430 BLACK SCREW CAP	B3097
SALINE 0.9% 99 ML FILL	MILK DILUTION BOTTLE	B3091
SELENITE BROTH 800 ML FILL	1L BOTTLE W/33-430 BLACK SCREW CAP	B3096
STANDARD METHODS AGAR 200 ML FILL	8 OZ BOSTON ROUND BOTTLE W/24-400 BLACK SCREW CAP	B3800
STANDARD METHODS AGAR 500 ML FILL	500 ML BOTTLE W/33-430 BLACK SCREW CAP	B3810
STERILE DEIONIZED WATER 99ML FILL,	4 OZ BOSTON ROUND w/22-400 BLACK CAP	B3920

## T

TAT BROTH 500 ML FILL	500 ML BOTTLE W/33-430 BLACK SCREW CAP	B1450
TAT BROTH 990 ML FILL	1L BOTTLE W/33-430 BLACK SCREW CAP	B1455
TETRATHIONATE BROTH (HAJNA) 225 ML FILL	8 OZ BOSTON ROUND BOTTLE W/24-400 BLACK SCREW CAP	B7051
TETRATHIONATE BROTH (HAJNA) 500 ML FILL	500 ML BOTTLE W/33-430 BLACK SCREW CAP	B7052
TETRATHIONATE BROTH 1000 ML FILL	1L BOTTLE W/33-430 BLACK SCREW CAP	B4300
TETRATHIONATE BROTH (HAJNA) 1000 ML FILL	1L BOTTLE W/33-430 BLACK SCREW CAP	B7050
TETRATHIONATE BROTH W/BRILLIANT GREEN 2600 ML	128 OZ. BOTTLE (WIDE MOUTH, GALLON) 89MM CAP	B4350
TODD HEWITT BROTH 100 ML FILL	4 OZ. BOSTON ROUND w/22-400 BLK CAP	B6050
TRYPTIC SOY AGAR 100 ML FILL	8 OZ. PARAGON BOTTLE 53MM LUG CAP	B7015
TRYPTIC SOY AGAR 100 ML FILL	4 OZ. BOSTON ROUND w/22-400 BLK CAP	B7016
TRYPTIC SOY AGAR 200 ML FILL	8 OZ BOSTON ROUND BOTTLE W/24-400 BLACK SCREW CAP	B1320
TRYPTIC SOY AGAR 300 ML FILL	500 ML BOTTLE W/33-430 BLACK SCREW CAP	B1510
TRYPTIC SOY AGAR 400 ML FILL	500 ML BOTTLE W/33-430 BLACK SCREW CAP	B1508
TRYPTIC SOY AGAR 500 ML FILL	500 ML BOTTLE W/33-430 BLACK SCREW CAP	B7020
TRYPTIC SOY AGAR 500 ML FILL	1L BOTTLE W/33-430 BLACK SCREW CAP	B1511
TRYPTIC SOY AGAR 2X (DOUBLE STRENGTH) 100 ML FILL	8 OZ BOSTON ROUND BOTTLE W/24-400 BLACK SCREW CAP	B7012
TRYPTIC SOY AGAR 2X (DOUBLE STRENGTH) 400 ML FILL	500 ML BOTTLE W/33-430 BLACK SCREW CAP	B7000
TRYPTIC SOY AGAR 2X (DOUBLE STRENGTH) 400 ML FILL	1L BOTTLE W/33-430 BLACK SCREW CAP	B7001
TRYPTIC SOY AGAR W/ LECITHIN & POLYSORBATE 80 300 ML FILL	500 ML BOTTLE W/33-430 BLACK SCREW CAP	B1509
TRYPTIC SOY BROTH 8 ML FILL (TWO WEEK USP QC)	10 ML CRIMP CAP VIAL W/ RUBBER STOPPER	B2031
TRYPTIC SOY BROTH 20 ML FILL (TWO WEEK USP QC)	30 ML CRIMP CAP VIAL W/ RUBBER STOPPER	B2030
TRYPTIC SOY BROTH 40 ML FILL (TWO WEEK USP QC)	4 OZ. BOSTON ROUND w/22-400 BLK CAP	B2010
TRYPTIC SOY BROTH 80 ML FILL (TWO WEEK USP QC)	100 ML SERUM BOTTLE W/RUBBER STOPPER & ALUM CRIMP CAP	B2035
TRYPTIC SOY BROTH 90ML FILL (TWO WEEK USP QC)	8 OZ. PARAGON BOTTLE W/ LUG CAP	B2025
TRYPTIC SOY BROTH 90 ML FILL (TWO WEEK USP QC)	(4oz) 100 ML SERUM BOTTLE W/RUBBER STOPPER & ALUM CRIMP CAP	B2045



## Prepared Culture Media: Bottles

ITEM	SIZE	ITEM NO.
MRS AGAR 200 ML FILL	8 OZ BOSTON ROUND BOTTLE W/24-400 BLACK SCREW CAP	B3500
MUELLER HINTON BROTH 500 ML FILL	500 ML BOTTLE W/33-430 BLACK SCREW CAP	B3675
MYCOLOGY AGAR W/ ANTIBIOTICS 10 ML FILL SLOPE	1 OZ. BOTTLE (MYCO)	M5050

### N

NEUTRAL CREATINE SUCROSE AGAR (CSN) 200 ML FILL	8 OZ BOSTON ROUND BOTTLE W/24-400 BLACK SCREW CAP	B1295
NUTRIENT AGAR 200 ML	8 OZ BOSTON ROUND BOTTLE W/24-400 BLACK SCREW CAP	B1310
NUTRIENT AGAR 225 ML	8 OZ BOSTON ROUND BOTTLE W/24-400 BLACK SCREW CAP	B3525
NUTRIENT BROTH 100 ML FILL	8 OZ BOSTON ROUND BOTTLE W/24-400 BLACK SCREW CAP	B3550
NUTRIENT BROTH 200ML FILL	8 OZ BOSTON ROUND BOTTLE W/24-400 BLACK SCREW CAP	B3552
NUTRIENT BROTH 500ML FILL	500 ML BOTTLE W/33-430 BLACK SCREW CAP	B3575
NUTRIENT GELATIN 100 ML FILL	8 OZ BOSTON ROUND BOTTLE W/24-400 BLACK SCREW CAP	B1280
NZY TOP AGAROSE 500ML	500 ML BOTTLE W/33-430 BLACK SCREW CAP	B2201

### P

PEPTONE A W/ LECITHIN & POLY80	8 OZ ECONOMY JAR W/POLYPRO CAP (WIDE MOUTH)	B4011
PEPTONE WATER 0.1% 99 ML FILL	4 OZ. BOSTON ROUND w/22-400 BLK CAP	B4003
PEPTONE WATER 0.1% 100 ML FILL	4 OZ. BOSTON ROUND w/22-400 BLK CAP	B4000
PEPTONE WATER 0.1% 300 ML FILL	500 ML BOTTLE W/33-430 BLACK SCREW CAP W/ RUBBER SEPTUM	B4008
PEPTONE WATER 0.1% 300 ML FILL	500 ML BOTTLE W/33-430 BLACK SCREW CAP	B4009
PEPTONE WATER 0.1% 400 ML FILL	500 ML BOTTLE W/33-430 BLACK SCREW CAP	B4010
PEPTONE WATER 0.1% 500 ML FILL	500 ML BOTTLE W/33-430 BLACK SCREW CAP	B4025
PEPTONE WATER 1% 100 ML FILL	4 OZ. BOSTON ROUND w/22-400 BLK CAP	B4001
PEPTONE WATER 1% 500 ML FILL	1L BOTTLE W/33-430 BLACK SCREW CAP	B4035
PEPTONE WATER 1% 540 ML FILL	1L BOTTLE W/33-430 BLACK SCREW CAP	B4032
PEPTONE WATER 1% 1000 ML FILL	1L BOTTLE W/33-430 BLACK SCREW CAP	B4030
PHOSPHATE BUFFER DILUTION WATER W/MGCL2	1L BOTTLE W/33-430 BLACK SCREW CAP	B1305
PHOSPHATE BUFFER DILUTION WATER W/MGCL2	1L PLASTIC W/33-430 SCREW CAP	B1305P
PHOSPHATE BUFFERED WATER - BUTTERFIELD 99 ML FILL	4 OZ. BOSTON ROUND w/22-400 BLK CAP	B3750
PHOSPHATE BUFFER STOCK SOLUTION (USP) 990 ML FILL	1L BOTTLE W/33-430 BLACK SCREW CAP	B4045
PHOSPHATE BUFFERED SALINE 100 ML FILL (PBS)	8 OZ BOSTON ROUND BOTTLE W/24-400 BLACK SCREW CAP	B4040
PHOSPHATE BUFFERED SALINE 1000 ML FILL (PBS)	1L BOTTLE W/33-430 BLACK SCREW CAP	B4050
PHOSPHATE BUFFERED WATER (BUTTERFIELD) 100 ML	4 OZ. BOSTON ROUND w/22-400 BLK CAP	B3751
1% POLYSORBATE 80 W/ 0.5% LECITHIN SOLUTION 400 ML FILL	500 ML BOTTLE W/33-430 BLACK SCREW CAP	B1300
POTASSIUM HYDROXIDE 10% 250 ML FILL	8 OZ BOSTON ROUND AMBER BOTTLE W/24-400 BLACK SCREW CAP	B4249
POTASSIUM HYDROXIDE 10% 800 ML FILL	1L BOTTLE W/33-430 BLACK SCREW CAP	B4250
POTATO DEXTROSE AGAR 200 ML FILL	8 OZ BOSTON ROUND BOTTLE W/24-400 BLACK SCREW CAP	B3700
POTATO DEXTROSE AGAR 500 ML FILL	500 ML BOTTLE W/33-430 BLACK SCREW CAP	B3710
PSEUDOMONAS ISOLATION AGAR 200ML FILL	8 OZ BOSTON ROUND BOTTLE W/24-400 BLACK SCREW CAP	B1400

### R

R2A AGAR 200ML FILL	8 OZ BOSTON ROUND BOTTLE W/24-400 BLACK SCREW CAP	B1315
R2A AGAR 350 ML FILL	500ML S/C BOTTLE W/33-330 BLACK CAP	B4060
R2A AGAR 300 ML FILL	500ML S/C BOTTLE W/33-330 BLACK CAP	B4061
RESUSPENSION BUFFER 50 ML	4 OZ. BOSTON ROUND w/22-400 BLK CAP	B1320

## Prepared Culture Media: Plated

ITEM	SIZE	ITEM NO.
------	------	----------

### P

PEA AGAR W/5% SHEEP BLOOD 20 ML	100 MM X 15 MM STANDARD PETRI DISH	P1500
PEA AGAR W/O SHEEP BLOOD 20ML	100 MM X 15 MM STANDARD PETRI DISH	P1499
PEA AGAR W/O SHEEP BLOOD // TCBS AGAR // TRYPTIC SOY AGAR W/ NACL	100 X 15 MM TRIPLATE PETRI DISH	P3701
PHAGE AGAR 10 ML	100 MM X 15 MM STANDARD PETRI DISH	P1501
PHENOL RED LACTOSE AGAR // BRILLIANT GREEN AGAR	100 MM X 15 MM BIPLATE PETRI DISH	P3713
POTATO DEXTROSE AGAR (DEEP FILL) LOW pH 25 ML	100 MM X 15 MM STANDARD PETRI DISH	P1510
POTATO DEXTROSE AGAR 10 ML	60 MM X 15 MM PETRI DISH	P6090-PS
POTATO DEXTROSE AGAR 14 ML	65 MM X 15 MM CONTACT PLATE	P4015
POTATO DEXTROSE AGAR 30 ML (DOUBLE BAGGED)	100 MM X 15 MM STANDARD PETRI DISH	P1509
POTATO DEXTROSE AGAR W/ CHLORAMPHENICOL & CHLORTETRACYCLINE 20 ML	100 MM X 15 MM STANDARD PETRI DISH	P1508
PROPIONIBACTERIUM AGAR 30 ML	100 MM X 15 MM STANDARD PETRI DISH	P1505
PSEUDOMONAS ISOLATION AGAR 20 ML	100 MM X 15 MM STANDARD PETRI DISH	P1515
PSEUDOMONAS ISOLATION AGAR // PSEUDOMONAS ISOLATION AGAR	100 MM X 15 MM BIPLATE PETRI DISH	P3210
PSEUDOMONAS F AGAR 20 ML	100 MM X 15 MM STANDARD PETRI DISH	P1512
PSEUDOMONAS P AGAR 20 ML	100 MM X 15 MM STANDARD PETRI DISH	P1511

### R

R2A AGAR 10 ML	60 MM X 15 MM PETRI DISH	P6030
R2A AGAR 20 ML	100 MM X 15 MM STANDARD PETRI DISH	P1525
R2A AGAR 25 ML	100 MM X 15 MM STANDARD PETRI DISH	P1526
R2A AGAR W/L&P80 14 ML	65 MM X 15 MM CONTACT DISH	P4012
ROGOSA SL AGAR 20 ML	100 MM X 15 MM STANDARD PETRI DISH	P1520
ROSE BENGAL AGAR W/ CHLORAMPHENICOL 20 ML	100 MM X 15 MM STANDARD PETRI DISH	P1530
ROSE BENGAL GLUCOSE PEPTONE AGAR (MARPGA) 10 ML	60 MM X 15 MM PETRI DISH	P6005
ROSE BENGAL GLUCOSE PEPTONE AGAR (MARPGA) 30 ML	100 MM X 15 MM STANDARD PETRI DISH	P1020
ROSE BENGAL GLUCOSE PEPTONE AGAR W/STREPTOMYCIN AND FORM. 30 ML	100 MM X 15 MM STANDARD PETRI DISH	P1015

### S

SABOURAUD AGAR MODIFIED (EMMONS) PH7 30 ML	100 MM X 15 MM STANDARD PETRI DISH	P1549
SABOURAUD BHI AGAR W/ GENAMYCIN & CHLORAMPHENICOL 20 ML	100 X15 MM STANDARD PETRI DISH	P1535
SABOURAUD DEXTROSE AGAR 10 ML	60 MM X 15 MM PETRI DISH	P6040
SABOURAUD DEXTROSE AGAR 24 ML	100 MM X 15 MM STANDARD PETRI DISH	P1550
SABOURAUD DEXTROSE AGAR 30 ML	100 MM X 15 MM STANDARD PETRI DISH	P1554
SABOURAUD DEXTROSE AGAR 75 ML	150 MM X 15 MM LARGE PETRI DISH	P2600
SABOURAUD DEXTROSE AGAR W/ CHLORAMPHENICOL 20 ML	100 MM X 15 MM STANDARD PETRI DISH	P1551
SABOURAUD DEXTROSE AGAR W/ LEC. & POLYSORBATE 80 14 ML	65 MM X 15 MM CONTACT DISH	P4025
SABOURAUD DEXTROSE AGAR W/ LECITHIN & POLYSORBATE 80 (DBLD BAGGED) 14 ML	65 MM X 15 MM CONTACT DISH	P4026
SABOURAUD DEXTROSE AGAR W/ LEC. & POLYSORBATE 80	100 MM X 15 MM STANDARD PETRI DISH	P1553
SALMONELLA-SHIGELLA AGAR 20 ML	100 MM X 15 MM STANDARD PETRI DISH	P1600
SALMONELLA-SHIGELLA AGAR // SALMONELLA-SHIGELLA AGAR	100 MM X 15 MM BIPLATE PETRI DISH	P3230
SALMONELLA-SHIGELLA AGAR // XLD AGAR	100 MM X 15 MM BIPLATE PETRI DISH	P3220
SCHAEDLER'S AGAR 25 ML	100 MM X 15 MM STANDARD PETRI DISH	P1625
SCHAEDLER'S AGAR W/ KANAMYCIN 20 ML	100 MM X 15 MM STANDARD PETRI DISH	P9050
SELECTIVE STREPTOCOCCUS AGAR (MODIFIED) 20 ML	100 MM X 15 MM STANDARD PETRI DISH	P1640
SELECTIVE STREPTOCOCCUS AGAR (MODIFIED)	THE JEMBEC SYSTEM INCLUDES 8 MM X 5 1//2 MM X 1 MM JEMBEC DISH, 4"X 4" ZIP LOCK™ BAG & LABELS, CO2 TABLETS	J1050



## Prepared Culture Media: Plated

ITEM	SIZE	ITEM NO.
SELECTIVE STREPTOCOCCUS AGAR (MODIFIED) // TSA W/5% SHEEP BLOOD	100 X 15 MM BIPLATE PETRI DISH	P3101
SIMMONS CITRATE AGAR 20 ML	100 MM X 15 MM STANDARD PETRI DISH	P1602
(SORBITOL ) MACCONKEY AGAR 20 ML	100 MM X 15 MM STANDARD PETRI DISH	P1405
STANDARD METHODS AGAR (PLATE COUNT AGAR) 20 ML	100 MM X 15 MM STANDARD PETRI DISH	P1656
STANDARD METHODS AGAR (PLATE COUNT AGAR) W/ LECITHIN & POLYSORBATE 80 14 ML	65 MM X 15 MM CONTACT DISH	P4030
STAPH 110 AGAR 20 ML	100 MM X 15 MM STANDARD PETRI DISH	P1645
STANDARD METHODS AGAR W/5% POLY80 20 ML	100 MM X 15 MM STANDARD PETRI DISH	P1655
STREPTOMYCES AGAR 30ML	100 MM X 15 MM STANDARD PETRI DISH	P1605
<b>T</b>		
TCBS AGAR 20 ML	100 MM X 15 MM STANDARD PETRI DISH	P1651
TCBS AGAR // PEA AGAR W/O BLOOD // TRYPTIC SOY AGAR W/ NACL	100 MM X 15 MM TRIPLATE PETRI DISH	P3701
TERGITOL 7 AGAR 20ML	100 MM X 15 MM STANDARD PETRI DISH	P1701
TERGITOL 7 AGAR W/TTC 20ML	100 MM X 15 MM STANDARD PETRI DISH	P1702
TRIPLE – SULFITE –CYCLOSERINE AGAR (TSC AGAR) 20 ML	100 MM X 15 MM STANDARD PETRI DISH	P1658
TRYPTIC SOY AGAR 14 ML	65 MM X 15 MM CONTACT DISH	P4040
TRYPTIC SOY AGAR 10 ML	60 MM X 15 MM PETRI DISH	P6015
TRYPTIC SOY AGAR 20 ML	100 MM X 15 MM STANDARD PETRI DISH	P1660
TRYPTIC SOY AGAR 30 ML	100 MM X 15 MM STANDARD PETRI DISH	P1667
TRYPTIC SOY AGAR 30 ML (DOUBLE BAGGED)	100 MM X 15 MM STANDARD PETRI DISH	P1664
TRYPTIC SOY AGAR 75 ML	150 MM X 15 MM LARGE PETRI DISH	P2300
TRYPTIC SOY AGAR // MACCONKEY AGAR	100 MM X 15 MM BIPLATE PETRI DISH	P3110
TRYPTIC SOY AGAR W/POLY “20” & 0.5% LECITHIN 20 ML	100 MM X 15 MM STANDARD PETRI DISH	P1666
TRYPTIC SOY MODIFIED 11 AGAR 20 ML	100 MM X 15 MM STANDARD PETRI DISH	P1653
TRYPTIC SOY AGAR W/5% SUCROSE & 10% YEAST EXTRACT 20 ML	100 MM X 15 MM STANDARD PETRI DISH	P1652
TSA W/5% SHEEP BLOOD // TRYPTIC SOY AGAR	100 MM X 15 MM BIPLATE PETRI DISH	P3010
TRYPTIC SOY AGAR W/5% HORSE BLOOD 20 ML	100 MM X 15 MM STANDARD PETRI DISH	P1107
TRYPTIC SOY AGAR W/3% SHEEP BLOOD 20 ML	100 MM X 15 MM STANDARD PETRI DISH	P1101
TRYPTIC SOY AGAR W/5% SHEEP BLOOD 14 ML	65 MM X 15 MM CONTACT DISH	P4050
TRYPTIC SOY AGAR W/5% SHEEP BLOOD 20 ML	100 MM X 15 MM STANDARD PETRI DISH	P1100
TRYPTIC SOY AGAR W/5% SHEEP BLOOD 30 ML	100 MM X 15 MM STANDARD PETRI DISH	P1110
TRYPTIC SOY AGAR W/5% SHEEP BLOOD // CHOCOLATE AGAR	100 MM X 15 MM BIPLATE PETRI DISH	P3025
TRYPTIC SOY AGAR W/5% SHEEP BLOOD // EMB (LEVINE) AGAR	100 MM X 15 MM BIPLATE PETRI DISH	P3055
TRYPTIC SOY AGAR W/5% SHEEP BLOOD // MACCONKEY AGAR	100 MM X 15 MM BIPLATE PETRI DISH	P3100
TRYPTIC SOY AGAR W/5% SHEEP BLOOD // SELECTIVE STREPTOCOCCUS (MODIFIED)	100 MM X 15 MM BIPLATE PETRI DISH	P3101
TSA W/5% SHEEP BLOOD // TRYPTIC SOY AGAR	100 MM X 15 MM BIPLATE PETRI DISH	P3010
TRYPTIC SOY AGAR W/5% SHEEP BLOOD W/ NEOMYCIN 2.5 MG/L 20 ML	100 MM X 15 MM STANDARD PETRI DISH	P1680
TRYPTIC SOY AGAR W/5% SHEEP BLOOD W/ TETRACYCLINE 10 UG/L 20 ML	100 MM X 15 MM STANDARD PETRI DISH	P1119
TRYPTIC SOY AGAR W/5% SHEEP BLOOD & 1% ESCULIN 20 ML	100 MM X 15 MM STANDARD PETRI DISH	P1102
TRYPTIC SOY AGAR W/5% SHEEP BLOOD & 1.5% NACL 20 ML	100 MM X 15 MM STANDARD PETRI DISH	P1665
TRYPTIC SOY AGAR W/0.6% YEAST EXTRACT 20 ML	100 MM X 15 MM STANDARD PETRI DISH	P1663
TRYPTIC SOY AGAR W/LECITHIN & POLYSORBATE 20 0.5% 20ML	100 MM X 15 MM STANDARD PETRI DISH	P1666
TRYPTIC SOY AGAR W/ LECITHIN & POLYSORBATE 80 14 ML	65 MM X 15 MM CONTACT PLATE	P4000
TRYPTIC SOY AGAR W/ LECITHIN & POLYSORBATE 80 20 ML	100 MM X 15 MM STANDARD PETRI DISH	P1659
TRYPTIC SOY AGAR W/ LECITHIN & POLYSORBATE 80 (DBLD BAGGED) 14 ML	65X 15 MM CONTACT PLATE	P4001
TRYPTIC SOY AGAR W/L&P80	100 MM X 15 MM QUAD PETRI DISH	P3715
TRYPTIC SOY AGAR W/ NACL 20 ML	100 MM X 15 MM STANDARD PETRI DISH	P1661
TRYPTIC SOY AGAR W/ NACL // PEA W/O BLOOD // TCBS AGAR	100 MM X 15 MM TRIPLATE PETRI DISH	P3701

## Prepared Culture Media: Bottles

ITEM	SIZE	ITEM NO.
<b>L</b>		
LB BROTH (MILLER) W/ 100 MCG/ ML AMPICILLIN 500 ML FILL	500 ML BOTTLE W/33-430 BLACK SCREW CAP	B2340
LACTOSE AZOLECTIN POLYSORBATE 20 (LAP BROTH) 990 ML FILL	1L BOTTLE W/33-430 BLACK SCREW CAP	B3220
LACTOSE BROTH 90 ML FILL	(4oz) 100 ML SERUM BOTTLE W/RUBBER STOPPER & ALUM CRIMP CAP	B3200
LACTOSE BROTH 90 ML FILL	8 OZ BOSTON ROUND BOTTLE W/24-400 BLACK SCREW CAP	B3160
LACTOSE BROTH 90 ML FILL	8 OZ. PARAGON BOTTLE 53MM LUG CAP	B3202
LACTOSE BROTH 100 ML FILL	8 OZ. PARAGON BOTTLE 53MM LUG CAP	B3201
LACTOSE BROTH 225 ML FILL	8 OZ BOSTON ROUND BOTTLE W/24-400 BLACK SCREW CAP	B3152
LACTOSE BROTH 225 ML FILL	16 OZ. PARAGON BOTTLE 63MM LUG CAP	B3151
LACTOSE BROTH 225 ML FILL	16 OZ. PARAGON BOTTLE 63MM LUG CAP	B3150
LACTOSE BROTH 500 ML FILL	500 ML BOTTLE W/33-430 BLACK SCREW CAP	B3155
LACTOSE BROTH 990 ML FILL	1L BOTTLE W/33-430 BLACK SCREW CAP	B3156
LACTOSE BROTH W/ LECITHIN & POLYSORBATE 80 100 ML FILL	8OZ. PARAGON BOTTLE 53MM LUG CAP	B3204
LACTOSE BROTH W/ LECITHIN & POLYSORBATE 80 225 ML FILL	16 OZ. PARAGON BOTTLE 63MM LUG CAP	B3205
LACTOSE BROTH W/ LECITHIN & POLYSORBATE 80 500 ML FILL	500 ML BOTTLE W/33-430 BLACK SCREW CAP	B3157
LACTOSE BROTH W/ LECITHIN & POLYSORBATE 20 1000 ML FILL	1L BOTTLE W/33-430 BLACK SCREW CAP	B3165
LETHEEN BROTH 100 ML FILL	4 OZ. BOSTON ROUND w/22-400 BLK CAP	B3300
LETHEEN BROTH 100 ML	8 OZ. ECONOMY JAR W/POLYPRO CAP (WIDE MOUTH)	B3320
<b>M</b>		
MALT EXTRACT AGAR (ACGIH/Pitt) 200 ML FILL	8 OZ BOSTON ROUND BOTTLE W/24-400 BLACK SCREW CAP	B1295
MC FARLAND NUMBER 0.5, 5ML FILL	16 MM X 125 MM SCREW CAP TUBE	M0050
MC FARLAND NUMBER 0.9, 5ML FILL	16 MM X 125 MM SCREW CAP TUBE (MINIMUM PURCHASE OF 9 REQUIRED)	M0090
MC FARLAND NUMBER 1, 5ML FILL	16 MM X 125 MM SCREW CAP TUBE (MINIMUM PURCHASE OF 9 REQUIRED)	M0100
MC FARLAND NUMBER 2, 5ML FILL	16 MM X 125 MM SCREW CAP TUBE (MINIMUM PURCHASE OF 9 REQUIRED)	M0200
MC FARLAND NUMBER 3, 5ML FILL	16 MM X 125 MM SCREW CAP TUBE (MINIMUM PURCHASE OF 9 REQUIRED)	M0300
MC FARLAND NUMBER 4, 5ML FILL	16 MM X 125 MM SCREW CAP TUBE (MINIMUM PURCHASE OF 9 REQUIRED)	M0400
MC FARLAND NUMBER 5, 5ML FILL	16 MM X 125 MM SCREW CAP TUBE (MINIMUM PURCHASE OF 9 REQUIRED)	M0500
MC FARLAND NUMBER 6, 5ML FILL	16 MM X 125 MM SCREW CAP TUBE	M0600
MC FARLAND NUMBER 7, 5ML FILL	16 MM X 125 MM SCREW CAP TUBE (MINIMUM PURCHASE OF 9 REQUIRED)	M0700
MC FARLAND NUMBER 8, 5ML FILL	16 MM X 125 MM SCREW CAP TUBE (MINIMUM PURCHASE OF 9 REQUIRED)	M0800
MC FARLAND NUMBER 9, 5ML FILL	16 MM X 125 MM SCREW CAP TUBE (MINIMUM PURCHASE OF 9 REQUIRED)	M0900
MC FARLAND NUMBER 10, 5ML FILL	16 MM X 125 MM SCREW CAP TUBE (MINIMUM PURCHASE OF 9 REQUIRED)	M1000
MC FARLAND STANDARD SET (# 1 THRU # 10)	16 MM X 125 MM SCREW CAP TUBE (MINIMUM PURCHASE OF 9 REQUIRED)	M1100
M - ENDO AGAR LES 100 ML FILL	8 OZ BOSTON ROUND BOTTLE W/24-400 BLACK SCREW CAP	B1270
M PLATE COUNT BROTH 200 ML FILL	8 OZ BOSTON ROUND BOTTLE W/24-400 BLACK SCREW CAP	B3650



## Prepared Culture Media: Bottles

ITEM	SIZE	ITEM NO.
FLUID A - USP 300 ML FILL (TWO WEEK USP QC)	500 ML SERUM BOTTLE W/RUBBER STOPPER & ALUM CRIMP CAP	B8111
FLUID A - USP 400 ML FILL (TWO WEEK USP QC)	500 ML SERUM BOTTLE W/ RUBBER STOPPER & ALUM CRIMP CAP	B8112
FLUID A - USP 500 ML FILL (TWO WEEK USP QC)	500 ML BOTTLE W/33-430 BLACK SCREW CAP W/ RUBBER SEPTUM	B8113
FLUID A - USP 600 ML FILL (TWO WEEK USP QC)	1L SERUM BOTTLE W/RUBBER STOPPER & ALUM CRIMP CAP	B8115
FLUID D - USP 100 ML FILL (TWO WEEK USP QC)	MILK DILUTION BOTTLE 25MM	B8001
FLUID D - USP 100 ML FILL (TWO WEEK USP QC)	8 OZ. PARAGON BOTTLE	B8002
FLUID D - USP 200 ML FILL (TWO WEEK USP QC)	8 OZ BOSTON ROUND BOTTLE W/24-400 BLACK SCREW CAP	B8000
FLUID D - USP 200 ML FILL (TWO WEEK USP QC)	16 OZ. PARAGON BOTTLE 63MM LUG CAP	B8005
FLUID D - USP 300 ML FILL (TWO WEEK USP QC)	500 ML BOTTLE W/33-430 BLACK SCREW CAP W/ RUBBER SEPTUM	B8012
FLUID D - USP 500 ML FILL (TWO WEEK USP QC)	500 ML BOTTLE W/33-430 BLACK SCREW CAP	B8010
FLUID D - USP 500 ML FILL (TWO WEEK USP QC)	500 ML BOTTLE W/33-430 BLACK SCREW CAP W/ RUBBER SEPTUM	B8116
FLUID D - USP 500 ML FILL (TWO WEEK USP QC)	500 ML SERUM BOTTLE W/RUBBER STOPPER & ALUM CRIMP CAP	B8011
FLUID K - USP 500 ML FILL (TWO WEEK USP QC)	500 ML SERUM BOTTLE W/RUBBER STOPPER & ALUM CRIMP CAP	B8120
FLUID THIOGLYCOLLATE MEDIUM 8 ML FILL (TWO WEEK USP QC)	10 ML CRIMP CAP VIAL W/ RUBBER STOPPER	B4108
FLUID THIOGLYCOLLATE MEDIUM 20 ML	30 ML VIAL W/RUBBER SEPTUM & ALUMINUM CAP	B4113
FLUID THIOGLYCOLLATE MEDIUM 80 ML FILL (TWO WEEK USP QC)	(4oz) 100 ML SERUM BOTTLE W/RUBBER STOPPER & ALUM CRIMP CAP	B4115
FLUID THIOGLYCOLLATE MEDIUM 90 ML FILL (TWO WEEK USP QC)	(4oz) 100 ML SERUM BOTTLE W/RUBBER STOPPER & ALUM CRIMP CAP	B4210
FLUID THIOGLYCOLLATE MEDIUM 100 ML FILL (TWO WEEK USP QC)	4 OZ. BOSTON ROUND w/22-400 BLK CAP	B4150
FLUID THIOGLYCOLLATE MEDIUM 100 ML FILL (TWO WEEK USP QC)	(4oz) 100 ML SERUM BOTTLE W/RUBBER STOPPER & ALUM CRIMP CAP	B4200
FLUID THIOGLYCOLLATE MEDIUM 100 ML FILL (TWO WEEK USP QC)	8 OZ. PARAGON BOTTLE W/53MM LUG CAP	B4110
FLUID THIOGLYCOLLATE W/O INDICATOR 100 ML FILL (TWO WEEK USP QC)	8 OZ. PARAGON BOTTLE W/53MM LUG CAP	B4120
FLUID THIOGLYCOLLATE MEDIUM 200ML FILL (TWO WEEK USP QC)	8 OZ BOSTON ROUND BOTTLE W/24-400 BLACK SCREW CAP	B4140
FLUID THIOGLYCOLLATE MEDIUM 225 ML FILL (TWO WEEK USP QC)	16 OZ. PARAGON BOTTLE 63MM LUG CAP	B4130
FLUID THIOGLYCOLLATE 225 ML FILL (TWO WEEK USP QC)	500 ML FILL SERUM BOTTLE W/RUBBER STOPPER & ALUM CRIMP CAP	B6060
FLUID THIOGLYCOLLATE MEDIUM 250 ML FILL (TWO WEEK USP QC)	16 OZ. PARAGON BOTTLE 63MM LUG CAP	B6061
FLUID THIOGLYCOLLATE MEDIUM 300 ML FILL (TWO WEEK USP QC)	16 OZ. PARAGON BOTTLE 63MM LUG CAP	B6062
FLUID THIOGLYCOLLATE MEDIUM 300 ML FILL (TWO WEEK USP QC)	500 ML BOTTLE W/33-430 BLACK SCREW CAP	B6068
FLUID THIOGLYCOLLATE MEDIUM 300 ML FILL (TWO WEEK USP QC)	500 ML BOTTLE W/33-430 BLACK SCREW CAP W/ RUBBER SEPTUM	B6064
FLUID THIOGLYCOLLATE MEDIUM 500 ML FILL (TWO WEEK USP QC)	500 ML SERUM CAP BOTTLE W/ RUBBER STOPPER & ALUM CRIMP CAP	B6065
FLUID THIOGLYCOLLATE MEDIUM 500 ML FILL (TWO WEEK USP QC)	1L BOTTLE W/33-430 BLACK SCREW CAP	B6063
FLUID THIOGLYCOLLATE MEDIUM 1688 ML FILL (TWO WEEK USP QC)	128 OZ. BOTTLE (WIDE MOUTH, GALLON) 89MM CAP	B6067
FLUID THIOGLYCOLLATE MEDIUM 2600 ML FILL (TWO WEEK USP QC)	128 OZ. BOTTLE (WIDE MOUTH, GALLON) 89MM CAP	B6066
FLUID THIOGLYCOLLATE MEDIUM W/CELLULOSE 1000ML	1L BOTTLE W/33-430 BLACK SCREW CAP	B1040
FRASER BROTH (BBL) 225ML	16 OZ PARAGON 63MM LUG CAP	B2601
25% GLYCEROL NITRATE AGAR (G25-N) 200 ML FILL	8 OZ BOSTON ROUND BOTTLE W/24-400 BLACK SCREW CAP	B1290

## Prepared Culture Media: Plated

ITEM	SIZE	ITEM NO.
TRYPTIC SOY BROTH AGAR 20 ML	100 MM X 15 MM STANDARD PETRI DISH	P1669
TRYPTOSE GLUCOSE EXTRACT AGAR (TGE AGAR) 20 ML	100 MM X 15 MM STANDARD PETRI DISH	P1657
TSBV AGAR 20 ML	100 MM X 15 MM STANDARD PETRI DISH	P9056

### U

UNIVERSAL BEER AGAR 10 ML	60 MM X 15 MM PETRI DISH	P6050
UREAPLASMA DIFFERENTIAL AGAR (A7) 20 ML	100 MM X 15 MM STANDARD PETRI DISH	P1662
UREAPLASMA AGAR W/FECAL CALF SERUM 25 ML (FCS)	100 MM X 15 MM STANDARD PETRI DISH	P1662-FCS
UREAPLASMA AGAR // UREAPLASMA AGAR	100 MM X 15 MM BIPLATE PETRI DISH	P3662

### V

VEAL INFUSION AGAR 20 ML	100 MM X 15 MM STANDARD PETRI DISH	P1670
VIOLET RED BILE AGAR 14 ML	65 MM X 15 MM CONTACT DISH	P4080
VIOLET RED BILE AGAR 20 ML	100 MM X 15 MM STANDARD PETRI DISH	P1673
VIOLET RED BILE GLUCOSE AGAR 20 ML	100 MM X 15 MM STANDARD PETRI DISH	P1672
VIOLET RED BILE AGAR W/ 1% GLUCOSE 20 ML	100 MM X 15 MM STANDARD PETRI DISH	P1671
VOGEL JOHNSON AGAR 20 ML	100 MM X 15 MM STANDARD PETRI DISH	P1675
VOGEL JOHNSON AGAR // CETRIMIDE AGAR // MACCONKEY AGAR	100 MM X 15 MM TRIPLATE PETRI DISH	P3705
VOGEL JOHNSON AGAR // MANNITOL SALT AGAR	100 MM X 15 MM BIPLATE PETRI DISH	P3680
VOGEL JOHNSON // MANNITOL SALT // BAIRD PARKER // CETRIMIDE AGAR	100 MM X 15 MM QUAD PETRI DISH	P3707

### W

WOLINELLA AGAR 20 ML	100 MM X 15 MM STANDARD PETRI DISH	P9053
----------------------	------------------------------------	-------

### X

XLD AGAR 20 ML	100 MM X 15 MM STANDARD PETRI DISH	P1700
XLD AGAR // BRILLIANT GREEN AGAR // BISMUTH SULFITE AGAR	100 MM X 15 MM TRIPLATE PETRI DISH	P3702
XLD AGAR // HEKTOEN ENTERIC AGAR	100 MM X 15 MM BIPLATE PETRI DISH	P3200
XLD AGAR // HEKTOEN ENTERIC AGAR // BISMUTH SULFITE AGAR	100 MM X 15 MM TRIPLATE PETRI DISH	P3709
XLD AGAR // HEKTOEN ENTERIC // BRILLIANT GREEN AGAR	100 MM X 15 MM TRIPLATE PETRI DISH	P3706
XLD AGAR // SALMONELLA-SHIGELLA AGAR	100 MM X 15 MM BIPLATE PETRI DISH	P3220
XLD AGAR // XLD AGAR	100 MM X 15 MM BIPLATE PETRI DISH	P3710
XLT-4 AGAR 20 ML	100 MM X 15 MM STANDARD PETRI DISH	P1750
XLT-4 AGAR W/100MCG/ML NALIDIXIC ACID 20 ML	100 MM X 15 MM STANDARD PETRI DISH	P1751
XLT-4 AGAR // BRILLIANT GREEN AGAR W/ NOVIOBIOCIN	100 MM X 15 MM BIPLATE PETRI DISH	P3711

### Y

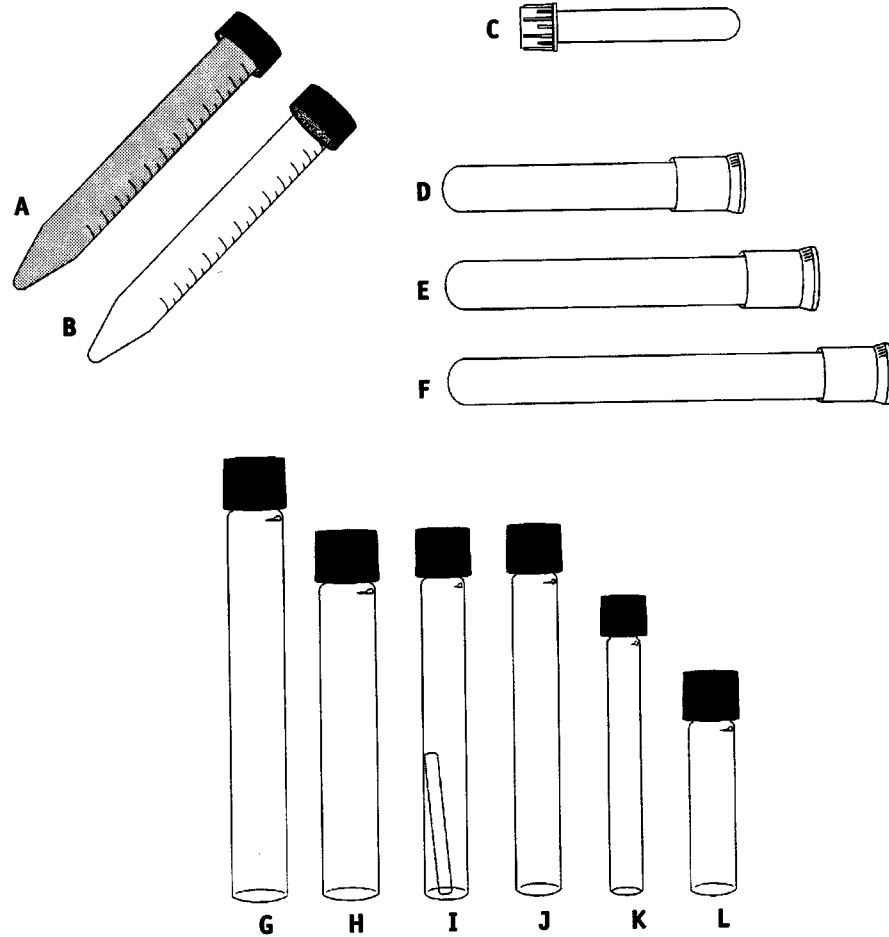
YEAST EXTRACT AGAR 20 ML	100 MM X 15 MM STANDARD PETRI DISH	P1800
YEAST MOLD (YM) II AGAR W/CHLORTETRACYCLINE 25 ML	100 MM X 15 MM STANDARD PETRI DISH	P8100
YEAST MOLD AGAR (YM) // YEAST MOLD AGAR (YM)	100 MM X 15 MM BIPLATE PETRI DISH	P3714



## Prepared Culture Media: Tubes

### Tube Specifications

- A** conical; screw cap, non sterile
- B** conical; screw cap, sterile
- C** 12 x 75 mm snap cap
- D** 16 x 100 mm slip on cap
- E** 16 x 125 mm slip on cap
- F** 16 x 150 mm slip on cap
- G** 20 x 150 mm screw cap
- H** 20 x 125 mm screw cap
- I** 16 x 125 mm screw cap with durham tube
- J** 16 x 125 mm screw cap
- K** 13 x 100 mm screw cap
- L** 16 x 75 mm screw cap



## Prepared Culture Media: Bottles

Note: the products listed are available in individual units. Please contact us for any special packaging requests and shelf life information.

ITEM	SIZE	ITEM NO.
2X YT AGAR 300 ML FILL	500 ML BOTTLE W/33-430 BLACK SCREW CAP	B8201
2X YT TOP AGAROSE 300 ML FILL	500 ML BOTTLE W/33-430 BLACK SCREW CAP	B8220
2X YT BROTH 1000 ML FILL	1 LITER STERILE PET BOTTLE (NALGE)	B8231
<b>A</b>		
ANAEROBIC AGAR 500 ML FILL	500 ML BOTTLE W/33-430 BLACK SCREW CAP	B1050
<b>B</b>		
BAIRD-PARKER AGAR 100 ML FILL	4 OZ. BOSTON ROUND w/22-400 BLK CAP	B1100
BIGGY AGAR (NICKERSON'S) 10 ML FILL SLOPE	1 OZ. BOTTLE (MYCO)	M5400
BRAIN HEART INFUSION BROTH 50 ML FILL	(4oz) 100 ML SERUM BOTTLE W/RUBBER STOPPER & ALUM CRIMP CAP	B1160
BUFFERED PEPTONE WATER 400 ML FILL	500 ML STERILE PET BOTTLE (NALGE)	B1180
BUTTERFIELD'S BUFFER 99ML FILL	4 OZ. BOSTON ROUND w/22-400 BLK CAP	B3750
BUTTERFIELD'S BUFFER W/ 0.1% PEPTONE 99 ML FILL	8 OZ. PARAGON BOTTLE W/53MM LUG CAP	B1200
BUTTERFIELD'S BUFFER (PBW) W/0.5% POLYSORBATE 80 50 ML FILL	4 OZ. BOSTON ROUND w/22-400 BLK CAP	B3760
<b>C</b>		
CAA/YNB TOP AGAROSE 100 ML	4 OZ. BOSTON ROUND w/22-400 BLK CAP	B1205
CZAPEK YEAST AGAR (CYA) 200 ML FILL	8 OZ BOSTON ROUND BOTTLE W/24-400 BLACK SCREW CAP	B1215
<b>D</b>		
DM-3 MEDIUM 50 ML	4 OZ. BOSTON ROUND w/22-400 BLK CAP	B1245
D & R MODIFIED PHOSPHATE BUFFER 90 ML FILL	8 OZ. PARAGON BOTTLE W/53MM LUG CAP	B1240
D & R MODIFIED PHOSPHATE BUFFER 500 ML FILL	500 ML BOTTLE W/33-430 BLACK SCREW CAP	B1250
D & R MODIFIED PHOSPHATE BUFFER 500 ML FILL	1 LITER SCREW CAP BOTTLE W/33-430 BLACK CAP	B1252
D & R MODIFIED PHOSPHATE BUFFER 1000 ML FILL	1 LITER SCREW CAP BOTTLE W/33-330 BLACK CAP	B1251
D & R MODIFIED PHOSPHATE BUFFER W/ LACTOSE 1000 ML FILL	1 LITER SCREW CAP BOTTLE W/33-330 BLACK CAP	B1255
D & R MODIFIED PHOSPHATE BUFFER W/ TSB 1000 ML FILL	1L BOTTLE W/33-430 BLACK SCREW CAP	B1256
DERMATOPHYTE TEST MEDIUM AGAR (DTM) 10 ML FILL SLOPE	1 OZ. BOTTLE (MYCOLOGY)	M5000
<b>E</b>		
EE BROTH (MOSSEL) 90 ML FILL	4 OZ. CENTURY OVAL	B1260
EE BROTH (MOSSEL) 99 ML FILL	8 OZ. PARAGON BOTTLE W/53MM LUG CAP	B1262
EE BROTH (MOSSEL) 900 ML FILL	1L PLASTIC W/33-430 SCREW CAP	B1261
<b>F</b>		
FLUID A - USP 100 ML FILL (TWO WEEK USP QC)	(4oz) 100 ML SERUM BOTTLE W/RUBBER STOPPER & ALUM CRIMP CAP	B8110
FLUID A - USP 300 ML FILL (TWO WEEK USP QC)	500 ML BOTTLE W/33-430 BLACK SCREW CAP	B8114



## Prepared Culture Media: Bottles

### Bottle Specifications

- A** 16 oz. paragon; 63/400 white lug cap
- B** 4 oz. wide mouth bottle; white poly cap
- C** 500 ml PETG bottle
- D** 500 ml serum bottle; crimp cap with rubber stopper
- E** 4 oz. serum bottle; crimp cap and rubber stopper
- F** 30 mg vial; crimp cap and rubber stopper
- G** 10 ml vial; crimp cap and rubber stopper
- H** 4 oz. Boston Round; cap 22/400
- I** 1 oz. century oval; 20/400 black screw cap
- J** 160 ml milk dilution; 28/400 black cap
- K** 8 oz. paragon; 58/400 white lug cap
- L** 32 oz. economy jar
- M** 1 liter screw cap bottle; 33/430 black screw cap
- N** 500 ml screw cap bottle; 33/430 black screw cap
- O** 8 oz. Boston Round; 24/400 rubber septum screw cap
- P** 1 oz. amber bottle; 20/400 black screw cap w/ eye dropper
- Q** Dropper



## Prepared Culture Media: Tubes

**Note: the products listed are available in packages of 10 or cases of 100. Please contact us for any special packaging requests and shelf life information.**

ITEM	SIZE	ITEM NO.
<b>A</b>		
AK #2 AGAR SLANT	16 MM X 125 MM SCREW CAP TUBE	T0601
ANDRADES BROTH BASE & DURHAM TUBE 8 ML	16 MM X 125 MM SCREW CAP TUBE	T0515
ANDRADES BROTH W/ADONITOL & DURHAM TUBE 8 ML	16 MM X 125 MM SCREW CAP TUBE	T0501
ANDRADES BROTH W/ARABINOSE & DURHAM TUBE 8 ML	16 MM X 125 MM SCREW CAP TUBE	T0502
ANDRADES BROTH W/ 1% CELOBIOSE & DURHAM TUBE 8 ML	16 MM X 125 MM SCREW CAP TUBE	T0514
ANDRADES BROTH W/ DEXTROSE & DURHAM TUBE 8 ML	16 MM X 125 MM SCREW CAP TUBE	T0503
ANDRADES BROTH W/ DULCITOL & DURHAM TUBE 8 ML	16 MM X 125 MM SCREW CAP TUBE	T0516
ANDRADES BROTH W/ FRUCTOSE & DURHAM TUBE 8 ML	16 MM X 125 MM SCREW CAP TUBE	T0517
ANDRADES BROTH W/INOSITOL & DURHAM TUBE 8 ML	16 MM X 125 MM SCREW CAP TUBE	T0504
ANDRADES BROTH W/LACTOSE & DURHAM TUBE 8 ML	16 MM X 125 MM SCREW CAP TUBE	T0505
ANDRADES BROTH W/ MALTOSE & DURHAM TUBE 8 ML	16 MM X 125 MM SCREW CAP TUBE	T0506
ANDRADES BROTH W/ MANNITOL & DURHAM TUBE 8 ML	16 MM X 125 MM SCREW CAP TUBE	T0507
ANDRADES BROTH W/ RAFFINOSE & DURHAM TUBE 8 ML	16 MM X 125 MM SCREW CAP TUBE	T0508
ANDRADES BROTH W/ RHAMNOSE & DURHAM TUBE 8 ML	16 MM X 125 MM SCREW CAP TUBE	T0509
ANDRADES BROTH W/ SALICIN & DURHAM TUBE 8 ML	16 MM X 125 MM SCREW CAP TUBE	T0510
ANDRADES BROTH W/ SORBITOL & DURHAM TUBE 8 ML	16 MM X 125 MM SCREW CAP TUBE	T0511
ANDRADES BROTH W/ SUCROSE & DURHAM TUBE 8 ML	16 MM X 125 MM SCREW CAP TUBE	T0512
ANDRADES BROTH W/ XYLOSE & DURHAM TUBE 8 ML	16 MM X 125 MM SCREW CAP TUBE	T0513
ARGININE-GLUCOSE SLANT (AGS)	16 MM X 125 MM SCREW CAP TUBE	T0700
<b>B</b>		
BE/YE/SI AGAR 20ML DEEP	20 MM X 125 MM SCREW CAP TUBE	T1110
BRAIN HEART INFUSION AGAR SLANT 8 ML	16 MM X 125 MM SCREW CAP TUBE	T1150
BRAIN HEART INFUSION AGAR SLANT 8 ML	16 MM X 100 MM SCREW CAP TUBE	T1151
BRAIN HEART INFUSION AGAR SLANT 14 ML	20 MM X 125 MM SCREW CAP TUBE	T1152
BRAIN HEART INFUSION AGAR SLANT W/ 1.15% NACL	16 MM X 125 MM SCREW CAP TUBE	T1165
BHI AGAR W/ CHLORAMPHENICOL & CYCLOHEXIMIDE 14 ML	20 MM X 125 MM SCREW CAP TUBE	T1153
BRAIN HEART INFUSION BROTH 0.5 ML	13 MM X 100 MM SCREW CAP TUBE	T1155
BRAIN HEART INFUSION BROTH 5 ML	16 MM X 125 MM SCREW CAP TUBE	T1160
BRAIN HEART INFUSION BROTH 10 ML	16 MM X 125 MM SCREW CAP TUBE	T1161
BRAIN HEART INFUSION BROTH W/ FILDES 10 ML	16 MM X 125 MM SCREW CAP TUBE	T1162
BILE ESCULIN AGAR SLANT	13 MM X 100 MM SCREW CAP TUBE	T1050
BILE ESCULIN AGAR SLANT	16 MM X 125 MM SCREW CAP TUBE	T1051
BRILLIANT GREEN BILE BROTH & DURHAM TUBE 10 ML	16 MM X 125 MM SCREW CAP TUBE	T1172
BRUCELLA AGAR POUR 20 ML	20 MM X 125 MM SCREW CAP TUBE	T1184
BRUCELLA AGAR SLANT	16 MM X 125 MM CULTURE TUBE	T1186
BUTTERFIELD BUFFER W/0.01% PEPTONE 9 ML	16 MM X 125 MM SCREW CAP TUBE	T1190
<b>C</b>		
CAA/YNB SLANT 9 ML	16 MM X 125 MM SCREW CAP TUBE	T1452
CARY BLAIR TRANSPORT AGAR	20 MM X 125 MM SCREW CAP TUBE	T1208
CTA W/O CARBOHYDRATES	13 MM X 100 MM SCREW CAP TUBE	T1400
CTA W/ DEXTROSE	13 MM X 100 MM SCREW CAP TUBE	T1410
CTA W/ FRUCTOSE	13 MM X 100 MM SCREW CAP TUBE	T1420
CTA W/ LACTOSE	13 MM X 100 MM SCREW CAP TUBE	T1430
CTA W/ MALTOSE	13 MM X 100 MM SCREW CAP TUBE	T1440



## Prepared Culture Media: Tubes

ITEM	SIZE	ITEM NO.
CTA W/ SUCROSE	13 MM X 100 MM SCREW CAP TUBE	T1450
CAMPY – THIO BROTH 10 ML	16 MM X 125 MM SCREW CAP TUBE	T1200
CETRIMIDE AGAR SLANT	16 MM X 125 MM SCREW CAP TUBE	T1210
CHOCOLATE AGAR W/ ENRICHMENT SLANT	16 MM X 125 MM SCREW CAP TUBE	T1250
COOKED MEAT MEDIUM 10 ML	16 MM X 125 MM SCREW CAP TUBE	T1300
COOKED MEAT MEDIUM 4 ML	13 MM X 100 MM SCREW CAP TUBE	T1301
COOKED MEAT W/ GLUCOSE, H EMIN & VITAMIN K 10 ML	16 MM X 125 MM SCREW CAP TUBE	T1350
CZAPEK YEAST AGAR (CYA) 20ML	20 MM X 125 MM SCREW CAP TUBE	T1230

### D

D&R MODIFIED PHOSPHATE BUFFER SOLUTION 9ML	20 MM X 125 MM SCREW CAP TUBE	T1453
D/E NEUTRALIZING BROTH 3 ML	16 MM X 125 MM "POLY" TUBE	T1460
D/E NEUTRALIZING BROTH 3 ML	16 MM X 125 MM SCREW CAP TUBE	T1451
DEXTROSE PHOSPHATE BROTH 3.5 ML (SPECIAL HANDLING)	16 MM X 125 MM CULTURE TUBE	T1454
DEXTROSE PHOSPHATE BROTH 5 ML (SPECIAL HANDLING)	16 MM X 125 MM CULTURE TUBE	T1452
DEXTROSE PHOSPHATE BROTH 5 ML	16 MM X 125 MM SCREW CAP TUBE	T1458

### E

EC BROTH & DURHAM TUBE 10 ML	16 MM X 125 MM SCREW CAP TUBE	T1455
EC BROTH W/ MUG & DURHAM TUBE 10 ML	16 MM X 125 MM SCREW CAP TUBE	T1456

### F

FLUID A 25 ML	20 MM X 125 MM SCREW CAP TUBE	T1465
FLUID THIOGLYCOLLATE BROTH 5 ML	16 MM X 125 MM SCREW CAP TUBE	T1856
FLUID THIOGLYCOLLATE BROTH 10 ML	16 MM X 125 MM SCREW CAP TUBE	T1800
FLUID THIOGLYCOLLATE BROTH 10 ML (SPECIAL HANDLING)	16 MM X 150 MM CULTURE TUBE	T1805
FLUID THIOGLYCOLLATE 15 ML	20 MM X 125 MM SCREW CAP TUBE	T1809
FLUID THIOGLYCOLLATE 20 ML	20 MM X 150 MM SCREW CAP TUBE	T1810

### G

GBS SCREENING MEDIUM 3ML	13 MM X 100 MM SCREW CAP TUBE	T8000
GLYCEROL –25% NITRATE AGAR 20ML (G25N)	20 MM X 125 MM SCREW CAP TUBE	T1612
GN BROTH 10 ML	16 MM X 125 MM SCREW CAP TUBE	T1470

### I

INDOLE BROTH 4 ML	13 MM X 100 MM SCREW CAP TUBE	T1475
-------------------	-------------------------------	-------

### K

KLINGLER IRON AGAR SLANT (KIA)	16 MM X 125 MM CULTURE TUBE	T1479
--------------------------------	-----------------------------	-------

### L

LACTOSE BROTH 10 ML	16 MM X 125 MM SCREW CAP TUBE	T1477
LAURYL SULFTE BROTH (2X STRENGHT) & DURHAM TUBE 10 ML	20 MM X 150 MM SCREW CAP TUBE	T1486
LAURYL SULFATE BROTH (SINGLE STRENGTH) & DURHAM TUBE 10 ML	16 MM X 125 MM SCREW CAP TUBE	T1485
LAURYL TRYPTOSE W/ MUG 9 ML	16 MM X 125 MM SCREW CAP TUBE	T1481
LETHEEN BROTH 5 ML	16 MM X 125 MM SCREW CAP TUBE	T1491
LETHEEN BROTH 9 ML	16 MM X 125 MM SCREW CAP TUBE	T1492
LETHEEN BROTH (AOAC) 9 ML	20 MM X 125 MM SCREW CAP TUBE	T1495

## Prepared Culture Media: Tubes

ITEM	SIZE	ITEM NO.
<b>V</b> VIOLET RED BILE GLUCOSE AGAR	20 MM X 125 MM SCREW CAP TUBE	T2104
<b>W</b> WILKINS CHALGREN BROTH 10ML	16 MM X 125 MM SCREW CAP TUBE	T2500
<b>Y</b> YM SLANT 8ML	18 MM X 150 MM CULTURE TUBE	T0400



## Prepared Culture Media: Tubes

ITEM	SIZE	ITEM NO.
THIOGLYCOLLATE BROTH W/O INDICATOR W/ HEMIN & VITAMIN K 10 ML	16 MM X 125 MM SCREW CAP TUBE	T1855
TODD HEWITT BROTH 10 ML	16 MM X 125 MM SCREW CAP TUBE	T1860
TODD HEWITT BROTH W/ 1% POLYSORBATE 80 0.5 ML	13 MM X 100 MM SCREW CAP TUBE	T1862
TODD HEWITT BROTH W/ CNA (LIM BROTH) 3 ML	13 MM X 100 MM SCREW CAP TUBE	T1865
TRIPLE SUGAR IRON AGAR SLANT (TSI)	16 MM X 125 MM SCREW CAP TUBE	T1950
TRIPLE SUGAR IRON AGAR SLANT (TSI) 4 ML	13 MM X 100 MM SCREW CAP TUBE	T1952
TRIPLE SUGAR IRON AGAR SLANT (TSI)	16 MM X 125 MM CULTURE TUBE (SPECIAL HANDLING)	T1951
TRYPTIC SOY AGAR DEEP 15 ML	20 MM X 125 MM SCREW CAP TUBE	T2061
TRYPTIC SOY AGAR DEEP 20 ML	20 MM X 125 MM SCREW CAP TUBE	T2060
TRYPTIC SOY AGAR DEEP 20 ML	20 MM X 150 MM SCREW CAP TUBE	T2063
TRYPTIC SOY AGAR MODIFIED II 20ML DEEP	20 MM X 150 MM SCREW CAP TUBE	T2070
TRYPTIC SOY AGAR W/ 5% SHEEP BLOOD SLANT	16 MM X 125 MM SCREW CAP TUBE	T1001
TRYPTIC SOY AGAR SLANT	16 MM X 125 MM SCREW CAP TUBE	T2050
TRYPTIC SOY AGAR W/ LECITHIN & POLYSORBATE 80 20 ML	20 MM X 125 MM SCREW CAP TUBE	T2065
TRYPTIC SOY AGAR W/ SUCROSE & 10% YEAST EXTRACT SLANT	16 MM X 125 MM SCREW CAP TUBE	T2023
TRYPTIC SOY BROTH 0.5 ML	13 MM X 100 MM SCREW CAP TUBE	T2011
TRYPTIC SOY BROTH 1 ML	13 MM X 100 MM SCREW CAP TUBE	T2001
TRYPTIC SOY BROTH 2 ML	13 MM X 100 MM SCREW CAP TUBE	T2010
TRYPTIC SOY BROTH 3.5 ML	16 MM X 125 MM CULTURE TUBE (SPECIAL HANDLING)	T1462
TRYPTIC SOY BROTH 4 ML	13 MM X 100 MM SCREW CAP TUBE	T2000
TRYPTIC SOY BROTH 4 ML	16 MM X 125 MM SCREW CAP TUBE	T2002
TRYPTIC SOY BROTH 5 ML	16 MM X 125 MM SCREW CAP TUBE	T2005
TRYPTIC SOY BROTH 3.5 ML	16 MM X 125 MM CULTURE TUBE (SPECIAL HANDLING)	T1464
TRYPTIC SOY BROTH 9 ML	16 MM X 125 MM SCREW CAP TUBE	T2009
TRYPTIC SOY BROTH 9 ML	20 MM X 125 MM SCREW CAP TUBE	T2029
TRYPTIC SOY BROTH 15 ML	20 MM X 125 MM SCREW CAP TUBE	T2014
TRYPTIC SOY BROTH 10 ML	16 MM X 125 MM SCREW CAP TUBE	T2020
TRYPTIC SOY BROTH 10 ML	20 MM X 125 MM SCREW CAP TUBE	T2008
TRYPTIC SOY BROTH 20 ML	20 MM X 125 MM SCREW CAP TUBE	T2012
TRYPTIC SOY BROTH 20 ML	20 MM X 150 MM SCREW CAP TUBE	T2013
TRYPTIC SOY BROTH 30 ML	20 MM X 150 MM SCREW CAP TUBE	T2017
TRYPTIC SOY BROTH W/ 15% GLYCEROL 1.5 ML	13 MM X 100 MM SCREW CAP TUBE	T2016
TRYPTIC SOY BROTH W/ 20% GLYCEROL 10 ML	16 MM X 125 MM SCREW CAP TUBE	T2007
TRYPTIC SOY BROTH W/5% SUCROSE & 10% YEAST EXTRACT SLANT	16 MM X 125 MM SCREW CAP TUBE	T2023
TRYPTIC SOY BROTH W/ 6.5% NACL 5 ML	16 MM X 125 MM SCREW CAP TUBE	T2006
TRYPTIC SOY BROTH W/LECITHIN & POLYSORBATE 20 9 ML	16 MM X 125 MM SCREW CAP TUBE	T2081
TRYPTIC SOY BROTH W/ LECITHIN & POLYSORBATE 80 9 ML	16 MM X 125 MM SCREW CAP TUBE	T2003
TRYPTIC SOY BROTH W/ LECITHIN & POLYSORBATE 80 10 ML	20 MM X 125 MM SCREW CAP TUBE	T2022
TRYPTIC SOY BROTH W/ LECITHIN & POLYSORBATE 80 20 ML	20 MM X 125 MM SCREW CAP TUBE	T2019
TRYPTIC SOY BROTH W/ YEAST EXTRACT 0.6% 5 ML	16 MM X 125 MM SCREW CAP TUBE	T2015
TRYPTIC SOY BROTH W/ YEAST EXTRACT 0.6% 8 ML	16 MM X 125 MM SCREW CAP TUBE	T2021

### U

UREA AGAR SLANT	13 MM X 100 MM SCREW CAP TUBE	T2100
UREAPLASMA BROTH 3 ML	13 MM X 100 MM SCREW CAP TUBE	T1662
UVM MODIFIED LISTERIA BROTH (SECONDARY) 9 ML	16 MM X 125 MM SCREW CAP TUBE	T2106
UVM MODIFIED LISTERIA BROTH (PRIMARY) 9 ML	16 MM X 125 MM SCREW CAP TUBE	T2105

## Prepared Culture Media: Tubes

ITEM	SIZE	ITEM NO.
LETHEEN BROTH 10 ML	16 MM X 125 MM SCREW CAP TUBE	T1489
LYSINE IRON AGAR SLANT (LIA)	16 MM X 125 MM SCREW CAP TUBE	T1500
LYSINE IRON AGAR SLANT (LIA)	16 MM X 125 MM CULTURE TUBE (SPECIAL HANDLING)	T1501
LYSINE IRON AGAR SLANT (LIA) 4 ML	13 MM X 100 MM SCREW CAP TUBE	T1502

### M

MacCONKEY BROTH 5 ML	13 MM X 100 MM SCREW CAP TUBE	T1521
MacCONKEY BROTH 10 ML	16 MM X 125 MM SCREW CAP TUBE	T1520
MALT EXTRACT AGAR (ACGIH/Pitt)	20 MM X 125 MM SCREW CAP TUBE	T1530
MIO MEDIUM 5 ML	16 MM X 125 MM SCREW CAP TUBE	T1540
MOELLER'S DEC. BROTH W/O ARGININE 5 ML	16 MM X 125 MM SCREW CAP TUBE	T1546
MOELLER'S DEC. BROTH W/ 3% AGAR & ARGININE 5 ML	16 MM X 125 MM SCREW CAP TUBE	T1551
MOELLER'S DEC. BROTH W/ ARGININE 5 ML	16 MM X 125 MM SCREW CAP TUBE	T1547
MOELLER'S DEC. BROTH W/ LYSINE 5 ML	16 MM X 125 MM SCREW CAP TUBE	T1548
MOELLER'S DEC. BROTH W/ ORNITHINE 5 ML	16 MM X 125 MM SCREW CAP TUBE	T1549
MOTILITY TEST MEDIUM W/ TTC 4 ML	13 MM X 100 MM SCREW CAP TUBE	T1550
MR-VP BROTH 2 ML	13 MM X 100 MM SCREW CAP TUBE	T1560
MUELLER HINTON BROTH 2 ML	13 MM X 100 MM SCREW CAP TUBE	T1542
MUELLER HINTON BROTH 5 ML	16 MM X 125 MM SCREW CAP TUBE	T1545
MUELLER HINTON BROTH 10 ML	16 MM X 125 MM SCREW CAP TUBE	T1544
MYCOLOGY AGAR W/ ANTIBIOTICS 5 ML	16 MM X 100 MM SCREW CAP TUBE	T1605
MYCOLOGY AGAR W/ ANTIBIOTICS 14 ML	20 MM X 125 MM SCREW CAP TUBE	T1600

### N

NEUTRAL CREATINE SUCROSE AGAR 20ML (CSN)	20 MM X 125 MM SCREW CAP TUBE	T1615
NEUTRALIZING BUFFER 10 ML	16 MM X 125 MM SCREW CAP TUBE	T1601
NITRATE BROTH 5 ML	16 MM X 125 MM SCREW CAP TUBE	T1620
NITRATE BROTH 6 ML	13 MM X 100 MM SCREW CAP TUBE	T1678
NITRATE BROTH & DURHAM TUBE 10 ML	16 MM X 125 MM SCREW CAP TUBE	T1622
NUTRIENT AGAR 20 ML DEEP	20 MM X 125 MM SCREW CAP TUBE	T1607
NUTRIENT AGAR SLANT	16 MM X 125 MM SCREW CAP TUBE	T1623
NUTRIENT AGAR SLANT	13 MM X 100 MM SCREW CAP TUBE	T1624
NUTRIENT BROTH 10 ML	16 MM X 125 MM SCREW CAP TUBE	T1658
NUTRIENT GELATIN DEEP	16 MM X 125 MM SCREW CAP TUBE	T1656
NUTRIENT SALT AGAR 20 ML	20 MM X 125 MM SCREW CAP TUBE	T1602
NUTRIENT SALT BROTH 20 ML	20 MM X 125 MM SCREW CAP TUBE	T1603

### O

OF MEDIUM W/ DEXTROSE 5 ML	16 MM X 125 MM SCREW CAP TUBE	T1630
OF MEDIUM W/ FRUCTOSE 5 ML	16 MM X 125 MM SCREW CAP TUBE	T3041
OF MEDIUM W/GALACTOSE 5 ML	16 MM X 125 MM SCREW CAP TUBE	T3042
OF MEDIUM W/ LACTOSE 5 ML	16 MM X 125 MM SCREW CAP TUBE	T3043
OF MEDIUM W/ MALTOSE 5 ML	16 MM X 125 MM SCREW CAP TUBE	T3044
OF MEDIUM W/ MANNITOL 5 ML	16 MM X 125 MM SCREW CAP TUBE	T3045
OF MEDIUM W/ MANNITOL 5 ML	16 MM X 125 MM SCREW CAP TUBE	T3046
OF MEDIUM W/ RHAMNOSE 5 ML	16 MM X 125 MM SCREW CAP TUBE	T3047
OF MEDIUM W/ SUCROSE 5 ML	16 MM X 125 MM SCREW CAP TUBE	T3048



## Prepared Culture Media: Tubes

ITEM	SIZE	ITEM NO.
OF MEDIUM W/ XYLOSE 5 ML	16 MM X 125 MM SCREW CAP TUBE	T3049
OF MEDIUM W/O CARBOHYDRATE 5 ML	16 MM X 125 MM SCREW CAP TUBE	T1629

### P

PEPTONE WATER 0.1% 9 ML	16 MM X 125 MM SCREW CAP TUBE	T1627
PEPTONE WATER 0.1% 9.9 ML	16 MM X 125 MM SCREW CAP TUBE	T1628
PEPTONE YEAST GLUCOSE (PYG) BROTH 15 ML	20 MM X 125 MM SCREW CAP TUBE	T4000
PHENOL RED AGAR SLANT W/ ARABINOSE 8 ML	16 MM X 125 MM SCREW CAP TUBE	T1665
PHENOL RED AGAR SLANT W/ DEXTROSE 8 ML	16 MM X 125 MM SCREW CAP TUBE	T1666
PHENOL RED AGAR SLANT W/ DULCITOL 8 ML	16 MM X 125 MM SCREW CAP TUBE	T1669
PHENOL RED AGAR SLANT W/ SORBITOL 8 ML	16 MM X 125 MM SCREW CAP TUBE	T1668
PHENOL RED AGAR SLANT W/ SUCROSE 8 ML	16 MM X 125 MM SCREW CAP TUBE	T1632
PHENOL RED AGAR SLANT W/ XYLOSE 8 ML	16 MM X 125 MM SCREW CAP TUBE	T1643
PHENOL RED BROTH BASE & DURHAM TUB E 8 ML	16 MM X 125 MM SCREW CAP TUBE	T1634
PHENOL RED BROTH W/ ARABINOSE & DURHAM TUBE 8 ML	16 MM X 125 MM SCREW CAP TUBE	T1644
PHENOL RED BROTH W/ DEXTROSE 25 ML	20 MM X 125 MM SCREW CAP TUBE	T1681
PHENOL RED BROTH W/ DEXTROSE & DURHAM TUBE 8 ML	16 MM X 125 MM SCREW CAP TUBE	T1635
PHENOL RED BROTH W/ DEXTROSE & DURHAM TUBE 25 ML	20 MM X 125 MM SCREW CAP TUBE	T1680
PHENOL RED BROTH W/LACTOSE & DURHAM TUBE 8 ML	16 MM X 125 MM SCREW CAP TUBE	T1641
PHENOL RED BROTH W/MALTOSE & DURHAM TUBE 8 ML	16 MM X 125 MM SCREW CAP TUBE	T1658
PHENOL RED BROTH W/ MANNITOL & DURHAM TUBE 8 ML	16 MM X 125 MM SCREW CAP TUBE	T1640
PHENOL RED BROTH W/SALICIN & DURHAM TUBE 8 ML	16 MM X 125 MM SCREW CAP TUBE	T1637
PHENOL RED BROTH W/SORBITOL & DURHAM TUBE 6 ML	13 MM X 100 MM SCREW CAP TUBE	T1711
PHENOL RED BROTH W/SUCROSE & DURHAM TUBE 8 ML	16 MM X 125 MM SCREW CAP TUBE	T1633
PHENOL RED BROTH W/XYLOSE & DURHAM TUBE 8 ML	16 MM X 125 MM SCREW CAP TUBE	T1670
PHENYLALANINE SLANT 4 ML	13 MM X 100 MM SCREW CAP TUBE	T1645
PHOSPHATE BUFFER BLANKS 9 ML	16 MM X 125 MM SCREW CAP TUBE	T1648
PHOSPHATE BUFFED SALINE 10 ML	16 MM X 125 MM SCREW CAP TUBE	T1647
PHOSPHATE BUFFED WATER 10 ML (BUTTERFIELDS)	16 MM X 125 MM "POLY" TUBE	T1646
PHOSPHATE BUFFERED WATER STOCK SOLUTION 5 ML	13 MM X 100 MM SCREW CAP TUBE	T1642
POTATO DEXTROSE AGAR DEEP 15 ML	20 MM X 125 MM SCREW CAP TUBE	T1639
POTATO DEXTROSE AGAR SLANT	20 MM X 125 MM SCREW CAP TUBE	T1638
POTATO DEXTROSE AGAR W/CHLORAMPHENICOL & CHLORTETRACYCLINE	20 MM X 125 MM SCREW CAP TUBE	T1608
PYRUVATE BROTH 2 ML	13 MM X 100 MM SCREW CAP TUBE	T1649
PURPLE BROTH W/ ARABINOSE & DURHAM TUBE 8 ML	16 MM X 125 MM SCREW CAP TUBE	T3011
PURPLE BROTH W/ DEXTROSE & DURHAM TUBE 8 ML	16 MM X 125 MM SCREW CAP TUBE	T3013
PURPLE BROTH W/ FRUCTOSE & DURHAM TUBE 8 ML	16 MM X 125 MM SCREW CAP TUBE	T3014
PURPLE BROTH W/ GALACTOSE & DURHAM TUBE 8 ML	16 MM X 125 MM SCREW CAP TUBE	T3015
PURPLE BROTH W/ LACTOSE & DURHAM TUBE 8 ML	16 MM X 125 MM SCREW CAP TUBE	T3017
PURPLE BROTH W/ SALICIN & DURHAM TUBE 8 ML	16 MM X 125 MM SCREW CAP TUBE	T3024
PURPLE BROTH W/ SORBITOL & DURHAM TUBE 8 ML	16 MM X 125 MM SCREW CAP TUBE	T3025

### R

R2A 20ML DEEP	20 MM X 125 MM SCREW CAP TUBE	T1661
R2A W/ CYCLOHEXAMIDE 20ML DEEP	20 MM X 125 MM SCREW CAP TUBE	T1683
RV BROTH 10ML	16 MM X 125 MM SCREW CAP TUBE	T1702

## Prepared Culture Media: Tubes

ITEM	SIZE	ITEM NO.
------	------	----------

### S

SABOURAUD DEXTROSE DEEP POUR 20 ML	20 MM X 125 MM SCREW CAP TUBE	T1671
SABOURAUD DEXTROSE DEEP POUR 20 ML	20 MM X 150 MM SCREW CAP TUBE	T1682
SABOURAUD DEXTROSE AGAR SLANT 14 ML	20 MM X 125 MM SCREW CAP TUBE	T1650
SABOURAUD DEXTROSE AGAR SLANT 11 ML	20 MM X 125 MM SCREW CAP TUBE	T1604
SABOURAUD DEXTROSE AGAR SLANT W/ CHLORAMPHENICOL	20 MM X 125 MM SCREW CAP TUBE	T1672
SABOURAUD DEXTROSE AGAR W/L&P80 DEEP	20 MM X 150 MM SCREW CAP TUBE	T1679
SABOURAUD DEXTROSE AGAR -BHI W/ CHLORAMPHENICOL & GENTAMICIN	20 MM X 125 MM SCREW CAP TUBE	T1659
SABOURAUD DEXTROSE BROTH 9 ML	16 MM X 125 MM SCREW CAP TUBE	T1674
SALINE 0.05% W/ 5% POLYSORBATE 80 5 ML	16 MM X 125 MM SCREW CAP TUBE	T1677
SALINE 0.45% 1.8 ML	12 MM X 75 MM "POLY" TUBE	T1653
SALINE 0.45% 2 ML	16 MM X 125 MM SCREW CAP TUBE	T1751
SALINE 0.76% (STERILE) 20 ML	20 MM X 150 MM SCREW CAP TUBE	T1621
SALINE 0.85% 5 ML	13 MM X 100 MM SCREW CAP TUBE	T1660
SALINE 0.85% 5 ML	16 MM X 125 MM SCREW CAP TUBE	T1651
SALINE 0.85% 9 ML	16 MM X 125 MM SCREW CAP TUBE	T1652
SALINE 0.85% 9 ML	20 MM X 125 MM SCREW CAP TUBE	T1755
SALINE 0.85% 9 ML	20 MM X 150 MM SCREW CAP TUBE	T1657
SALINE 0.85% 9.9 ML	16 MM X 125 MM SCREW CAP TUBE	T1750
SALINE 0.85% 9.9 ML	20 MM X 125 MM SCREW CAP TUBE	T1759
SALINE 0.85% 9.9 ML (SPECIAL HANDLING)	16 MM X 150 MM CULTURE TUBE	T1654
SALINE 0.85% 20 ML	20 MM X 150 MM SCREW CAP TUBE	T1676
SALT TOLERANCE BROTH 6.5% 4 ML	13 MM X 100 MM SCREW CAP TUBE	T1655
SCHAEDLER AGAR SLANT	20 MM X 125 MM SCREW CAP TUBE	T1675
SELENITE BROTH 10 ML	16 MM X 125 MM SCREW CAP TUBE	T1700
SELENITE-CYSTINE BROTH 10 ML	16 MM X 125 MM SCREW CAP TUBE	T1701
SELENITE-CYSTINE BROTH 20 ML	20 MM X 150 MM SCREW CAP TUBE	T1701-NYC
S-F BROTH W/INDICATOR 4 ML	13 MM X 100 MM SCREW CAP TUBE	T1715
SIM MEDIUM 8 ML	16 MM X 125 MM SCREW CAP TUBE	T1720
SIMMONS CITRATE SLANT	13 MM X 100 MM SCREW CAP TUBE	T1730
SKIM MILK (DOUBLE STRENGTH) 5 ML	16 MM X 125 MM SCREW CAP TUBE	T1732
SKIM MILK (DOUBLE STRENGTH) 15 ML	16 MM X 125 MM SCREW CAP TUBE	T1731
STANDARD METHODS AGAR 15 ML	20 MM X 125 MM SCREW CAP TUBE	T1763
STERILIZED DI WATER 1 ML	13 MM X 100 MM SCREW CAP TUBE	T1768
STERILIZED DI WATER 5 ML	16 MM X 125 MM SCREW CAP TUBE	T1766
STERILIZED DI WATER 5 ML (SPECIAL HANDLING)	16 MM X 125 MM CULTURE TUBE	T1765
STERILIZED DI WATER 9 ML	16 MM X 125 MM SCREW CAP TUBE	T1760
STERILIZED DI WATER 9.9 ML	16 MM X 125 MM SCREW CAP TUBE	T1761
STERILIZED DI WATER 20 ML	20 MM X 150 MM SCREW CAP TUBE	T1767

### T

TCBS DEEP 20 ML	20 MM X 125 MM SCREW CAP TUBE	T1790
TETRATHIONATE BROTH BASE 10 ML	16 MM X 125 MM SCREW CAP TUBE	T1791
TETRATHIONATE BROTH (HAJNA) 10 ML	16 MM X 125 MM SCREW CAP TUBE	T1795
TETRATHIONATE BROTH W/BRILLIANT GREEN	16 MM X 125 MM SCREW CAP TUBE	T1796
THIOGLYCOLLATE BROTH W/O INDICATOR 5 ML	16 MM X 125 MM SCREW CAP TUBE	T1851
THIOGLYCOLLATE BROTH W/O INDICATOR 10 ML	16 MM X 125 MM SCREW CAP TUBE	T1850